

LELIEVRE

PARIS

KYRIELLE - DORE

0652-03



Made in the Lelièvre factory, this semi-plain jacquard impresses with its technique using a slightly iridescent thread - golden, copper or dusty - for a sparkling rendering giving the impression of a soft rain.

Collection	L'ENVOLÉE FANTASTIQUE
------------	-----------------------

Brand	LELIEVRE
-------	----------

TECHNICAL DATA

Composition	Cotton 56% - Polyester 26% - Polyamide 9% - PC 9%
-------------	--


Width	142 cm
-------	--------


Repeat cut	No
------------	----

Vertical repeat	16 cm
-----------------	-------

Horizontal repeat	18 cm
-------------------	-------

Drop match	No
------------	----

Care	   
------	---

Uses	   
------	---

Martindale test	40 000 T
-----------------	----------

Weight / Linear metre	585 g
-----------------------	-------

LELIEVRE

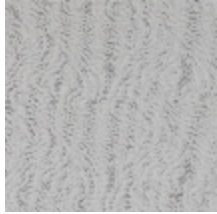
PARIS



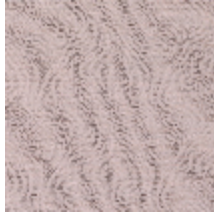
LELIEVRE

PARIS

Available colours



0652-01
**KYRIELLE -
ECUME**



0652-02
**KYRIELLE -
POUDRE**



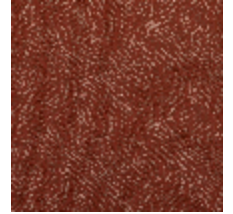
0652-03
KYRIELLE - DORE



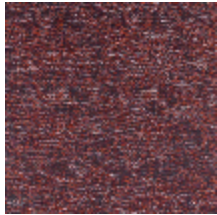
0652-04
KYRIELLE - MIEL



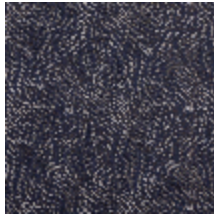
0652-05
**KYRIELLE -
AMBRE**



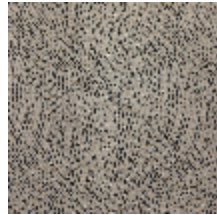
0652-06
**KYRIELLE -
TERRACOTTA**



0652-07
KYRIELLE - FIGUE



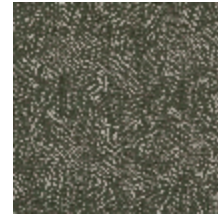
0652-08
**KYRIELLE -
INDIGO**



0652-09
**KYRIELLE -
GRAPHITE**



0652-10
KYRIELLE - JADE



0652-11
KYRIELLE - CEDRE

LELIEVRE

PARIS

KYRIELLE - DORE

0652-03

