

# LELIEVRE

PARIS

## KYRIELLE - JADE

0652-10



Made in the Lelièvre factory, this semi-plain jacquard impresses with its technique using a slightly iridescent thread - golden, copper or dusty - for a sparkling rendering giving the impression of a soft rain.

Collection L'ENVOLÉE FANTASTIQUE

Brand LELIÈVRE

### TECHNICAL DATA

Composition Cotton 56% - Polyester 26% - Polyamide 9% - PC 9%

Width 142 cm

Repeat cut No

Vertical repeat 16 cm

Horizontal repeat 18 cm

Drop match No

Care 

Uses 

Martindale test 40 000 T

Weight / Linear metre 585 g

# LELIEVRE

PARIS



[lelievrepairs.com](http://lelievrepairs.com)  
[contact@lelievrepairs.com](mailto:contact@lelievrepairs.com)

# LELIEVRE

PARIS

## Available colours



0652-01  
**KYRIELLE -  
ECUME**



0652-02  
**KYRIELLE -  
POUDRE**



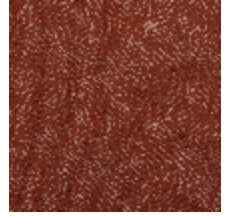
0652-03  
**KYRIELLE - DORE**



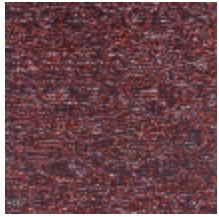
0652-04  
**KYRIELLE - MIEL**



0652-05  
**KYRIELLE -  
AMBRE**



0652-06  
**KYRIELLE -  
TERRACOTTA**



0652-07  
**KYRIELLE - FIGUE**



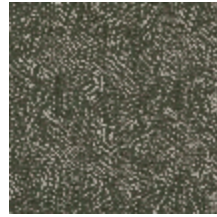
0652-08  
**KYRIELLE -  
INDIGO**



0652-09  
**KYRIELLE -  
GRAPHITE**



0652-10  
**KYRIELLE - JADE**



0652-11  
**KYRIELLE - CEDRE**

**KYRIELLE - JADE**

0652-10

