

**ALULA - CELADON**

0656-02



A part of the plumage of a bird's wing is called "alula". This small jacquard, inspired by the graphic plumages of the large jacquard, was designed and made in monochrome and multicolours to give a stylised feather effect.

Collection	L'ENVOLÉE FANTASTIQUE
------------	-----------------------

Brand	LELIEVRE PARIS
-------	----------------

---

**TECHNICAL DATA**


---

Composition	Polyester 68% - Cotton 26% - Polyamide 6%
-------------	--

Width	145 cm
-------	--------

Repeat cut	No
------------	----

Vertical repeat	7 cm
-----------------	------

Horizontal repeat	9 cm
-------------------	------

Drop match	No
------------	----

Care	   
------	---

Uses	   
------	---

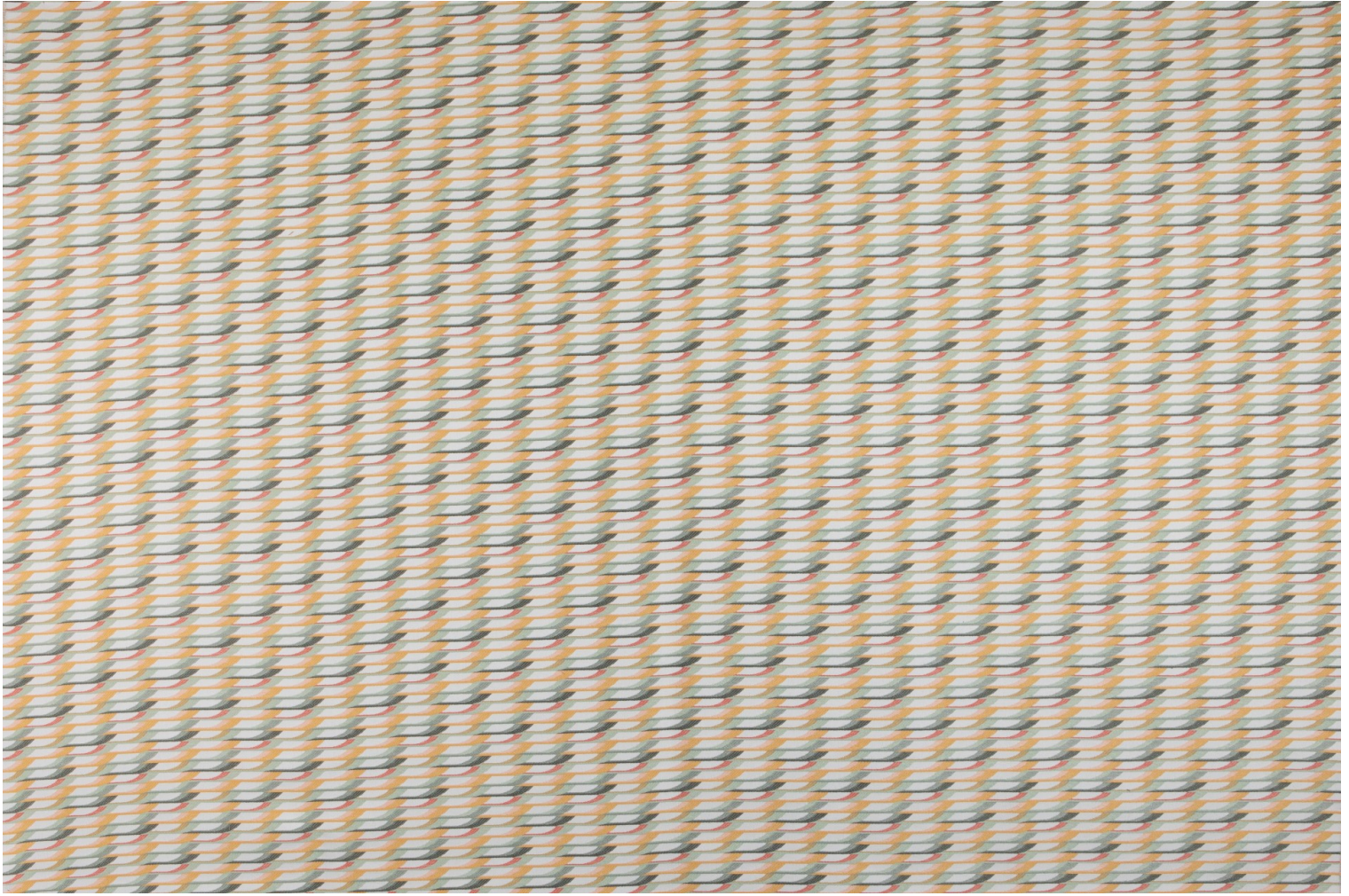
Martindale test	40 000 T
-----------------	----------

Weight / Linear metre	800 g
-----------------------	-------

---

# LELIEVRE

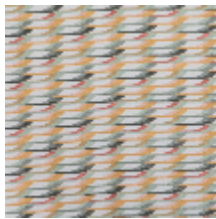
PARIS



## Available colours



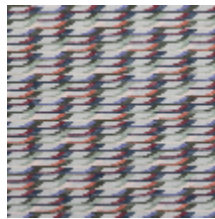
0656-01  
**ALULA - NATUREL**



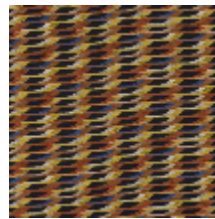
0656-02  
**ALULA -  
CELADON**



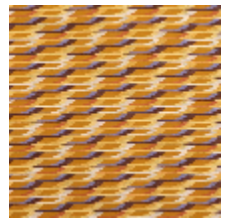
0656-03  
**ALULA - BLUSH**



0656-04  
**ALULA - SAUGE**



0656-05  
**ALULA - INDIGO**



0656-06  
**ALULA - AMBRE**

**ALULA - CELADON**

0656-02

