

# LELIEVRE

PARIS

## TRIBU M1 - LICHEN \*

0722-08



a taste of something different Based on straw marquetry and basketwork, this Jacquard fabric has an interlacing graphic design of ribbons in a lively contemporary range of colours. Ideal for upholstery and curtains, this exotic design coordinates with the whole collection.

Collection **COLLECTION 18**

Brand **LELIEVRE CONTRACT**

### TECHNICAL DATA

Composition **Polyester FR 100%**

Width **140 cm**

Repeat cut **No**

Vertical repeat **3 cm**

Horizontal repeat **7 cm**

Drop match **No**

Care 

Uses 

Martindale test **40 000 T**

Weight / Linear metre **660 g**

Fire rating **M1 - IMO PART 7&8 - EN1021-1&2**

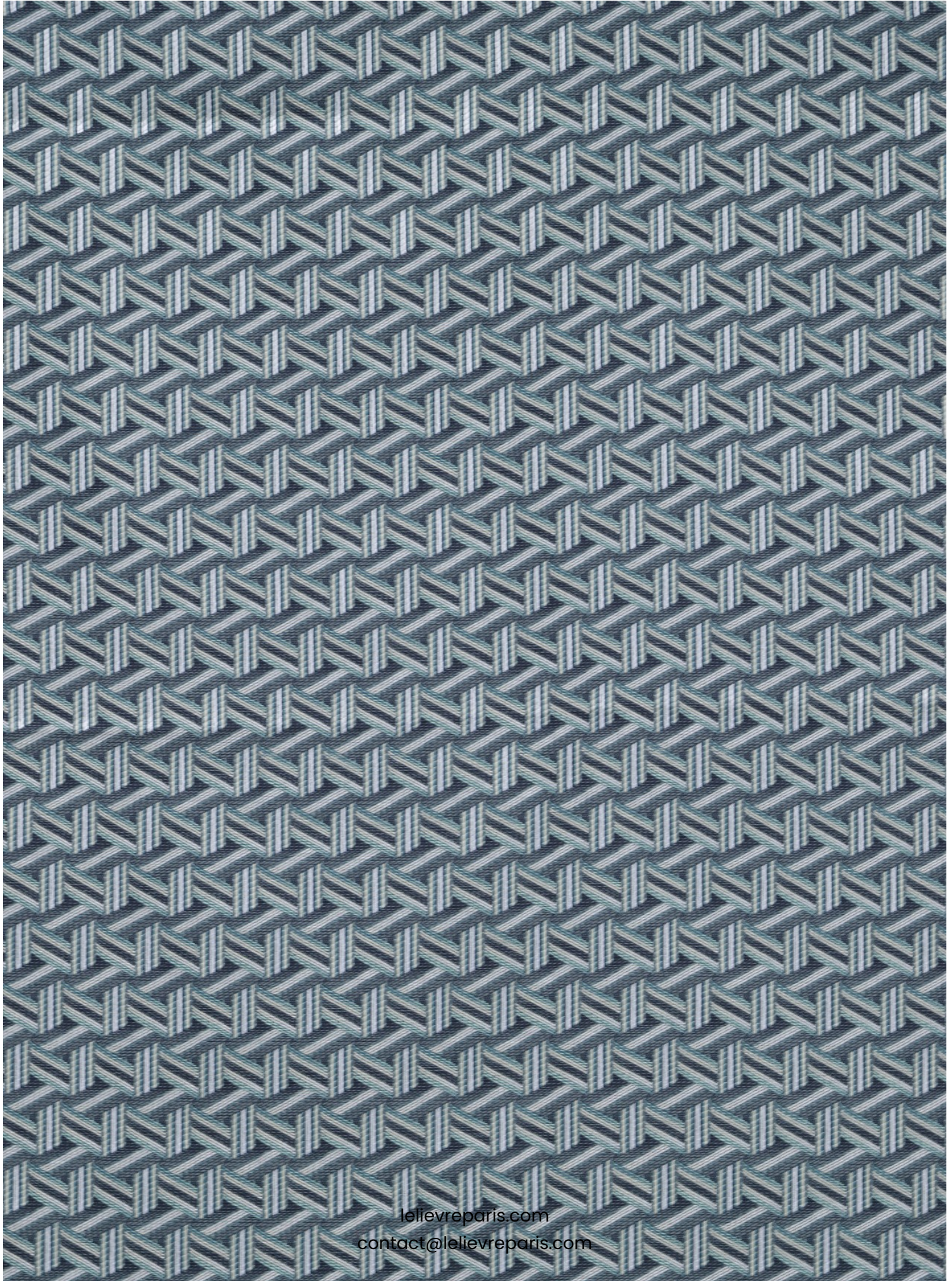
# LELIEVRE

PARIS



# LELIEVRE

PARIS



[lelievreparis.com](http://lelievreparis.com)  
[contact@lelievreparis.com](mailto:contact@lelievreparis.com)



# LELIEVRE

PARIS

## Available colours



0722-01  
**TRIBU M1 -  
CITRON \***



0722-02  
**TRIBU M1 -  
ABRICOT \***



0722-03  
**TRIBU M1 -  
CUIVRE \***



0722-05  
**TRIBU M1 -  
SORBET \***



0722-07  
**TRIBU M1 - CYAN  
\***



0722-08  
**TRIBU M1 -  
LICHEN \***



0722-10  
**TRIBU M1 - PAILLE  
\***



0722-12  
**TRIBU M1 -  
NATUREL \***

**TRIBU M1 - LICHEN \***

0722-08

