

LELIEVRE

PARIS

PLEINE LUNE - GRES *

0738-03



This wide width fabric has the appearance of a cotton toile for the creation of blackout curtains with a natural look. The reverse is flocked to block the passage of light resulting in total darkness in any room.

Collection	COLLECTION 21
------------	---------------

Brand	LELIEVRE PARIS CONTRACT
-------	-------------------------

TECHNICAL DATA


Type	Plain
------	-------

Composition	Polyester 52% - Cotton 48%
-------------	----------------------------

Width	277 cm
-------	--------

Repeat cut	No
------------	----

Half drop match	No
-----------------	----

Care	  
------	---

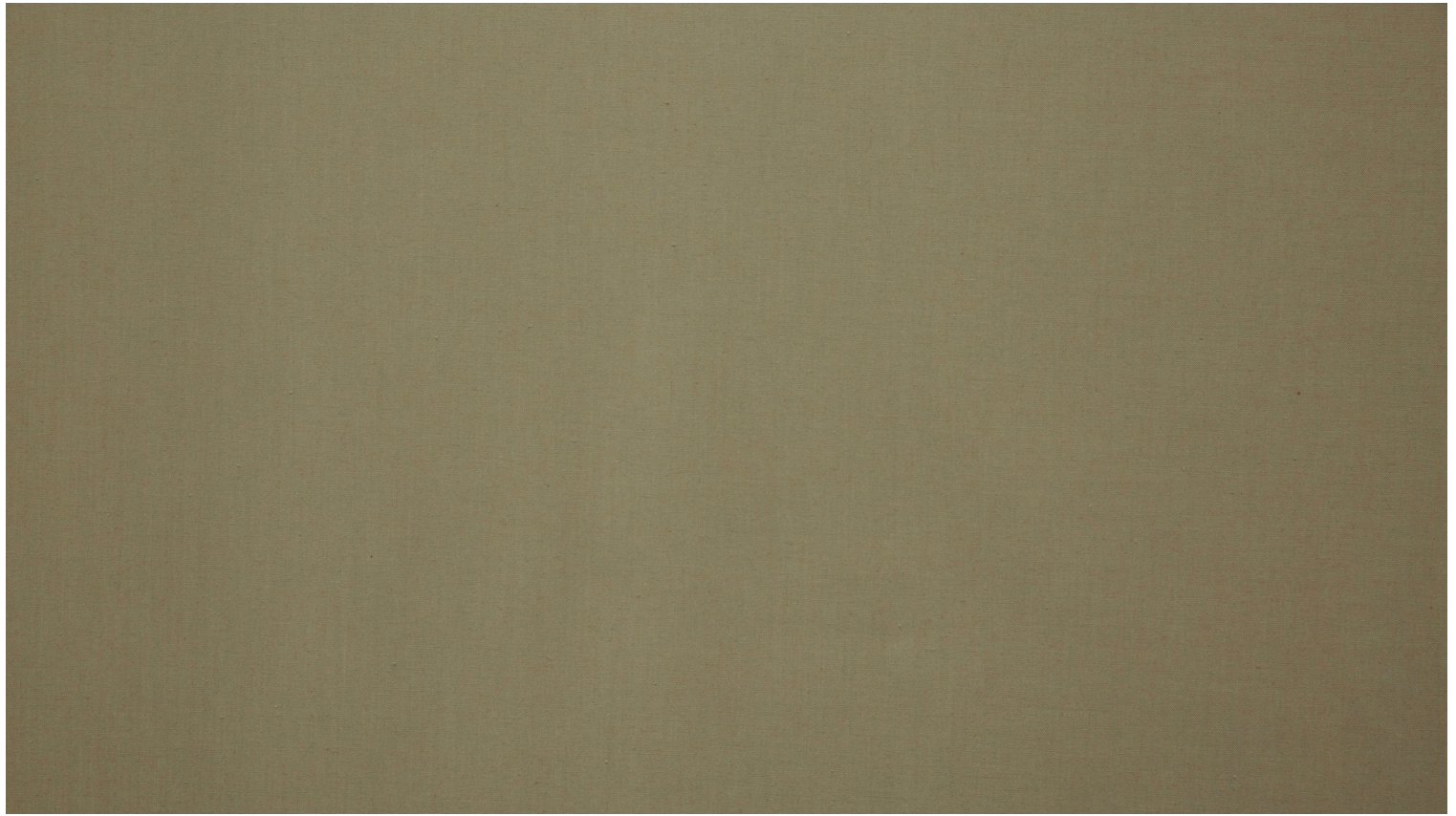
Uses	  
------	---

Weight / Linear metre	900 g
-----------------------	-------

Fire rating	M2
-------------	----

LELIEVRE

PARIS



Available colours



0738-01
**PLEINE LUNE -
BRUME ***



0738-03
**PLEINE LUNE -
GRES ***



0738-04
**PLEINE LUNE -
OCRE ***



0738-05
**PLEINE LUNE -
CREME ***



0738-06
**PLEINE LUNE -
KAOLIN ***



0738-07
**PLEINE LUNE -
COQUILLE ***



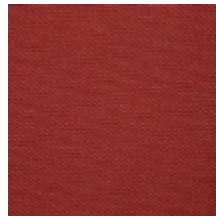
0738-08
**PLEINE LUNE -
ANIS ***



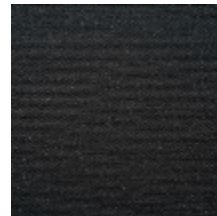
0738-10
**PLEINE LUNE -
TURQUOISE ***



0738-12
**PLEINE LUNE -
FRAMBOISE ***



0738-13
**PLEINE LUNE -
ROUGE ***



0738-14
**PLEINE LUNE -
NOIR ***



0738-02
**PLEINE LUNE -
FUMEE ***

PLEINE LUNE - GRES *

0738-03

