

# LELIEVRE

PARIS

## PLEINE LUNE - KAOLIN \*

0738-06



This wide width fabric has the appearance of a cotton toile for the creation of blackout curtains with a natural look. The reverse is flocked to block the passage of light resulting in total darkness in any room.

---

Collection	COLLECTION 21
------------	---------------

---

Brand	LELIÈVRE PARIS CONTRACT
-------	-------------------------

---

### TECHNICAL DATA

---

Type	Plain
------	-------

---

Composition	Polyester 52% - Cotton 48%
-------------	----------------------------

---

Width	277 cm
-------	--------


---

Repeat cut	No
------------	----

---

Half drop match	No
-----------------	----

---

Care	  
------	---

---

Uses	  
------	---

---

Weight / Linear metre	900 g
-----------------------	-------

---

Fire rating	M2
-------------	----

---

# LELIEVRE

PARIS



## Available colours



0738-01  
**PLEINE LUNE -  
BRUME \***



0738-03  
**PLEINE LUNE -  
GRES \***



0738-04  
**PLEINE LUNE -  
OCRE \***



0738-05  
**PLEINE LUNE -  
CREME \***



0738-06  
**PLEINE LUNE -  
KAOLIN \***



0738-07  
**PLEINE LUNE -  
COQUILLE \***



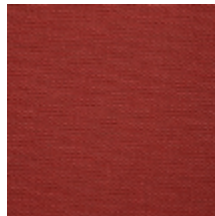
0738-08  
**PLEINE LUNE -  
ANIS \***



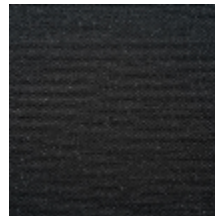
0738-10  
**PLEINE LUNE -  
TURQUOISE \***



0738-12  
**PLEINE LUNE -  
FRAMBOISE \***



0738-13  
**PLEINE LUNE -  
ROUGE \***



0738-14  
**PLEINE LUNE -  
NOIR \***



0738-02  
**PLEINE LUNE -  
FUMEE \***

**PLEINE LUNE - KAOLIN \***

0738-06

