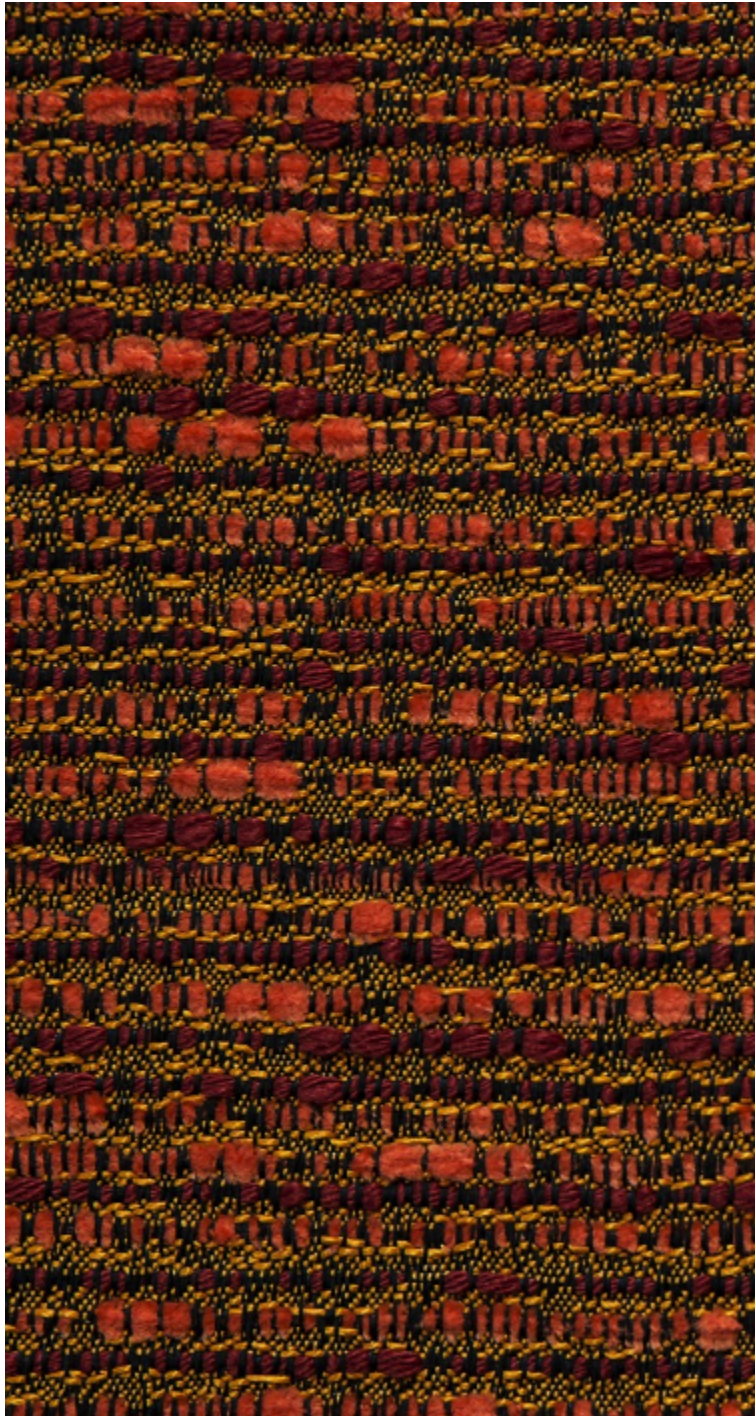


**MARACAS M1 - SANGUINE**

0751-05



Maracas is a colourful combination of matte chenille weft with a fine lustrous thread. The black thread creates a bold contrast between the colours and really finishes the fabric beautifully. The texture of the fabric itself is incredibly rounded and pleasant, whilst the range of natural and mineral shades offers both an ethnic and fruitful touch. Ideal for Hard-wearing chairs, curtains and accessories with touches of bold colour.

Collection	COLLECTION 22
------------	---------------

Brand	LELIEVRE CONTRACT
-------	-------------------

## TECHNICAL DATA


Composition	Polyester TREVIRA CS 100%
-------------	---------------------------

Width	136 cm
-------	--------

Repeat cut	No
------------	----

Drop match	No
------------	----

Care	   
------	---

Uses	   
------	---

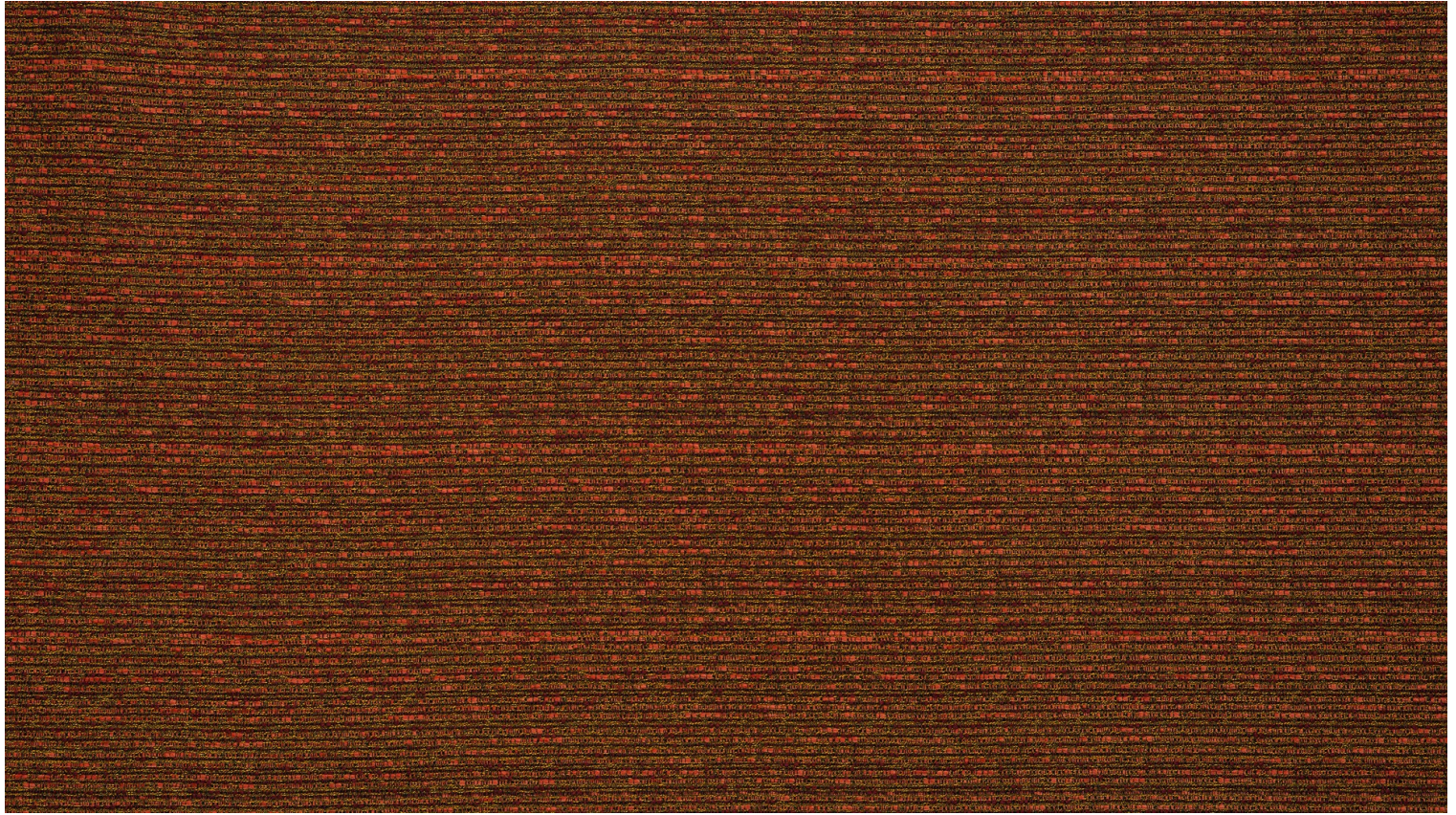
Martindale test	35 000 T
-----------------	----------

Weight / Linear metre	504 g
-----------------------	-------

Fire rating	M1 - IMO PART 8
-------------	-----------------

# LELIEVRE

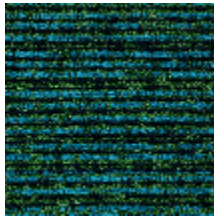
PARIS



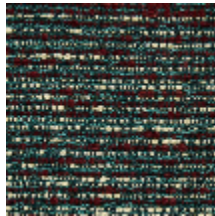
## Available colours



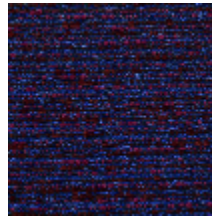
0751-01  
**MARACAS MI -  
BLEUET**



0751-02  
**MARACAS MI -  
MALACHITE**



0751-03  
**MARACAS MI -  
MASSAI**



0751-04  
**MARACAS MI -  
FRUITS ROUGES**



0751-05  
**MARACAS MI -  
SANGUINE**



0751-06  
**MARACAS MI -  
TOURNESOL**



0751-07  
**MARACAS MI -  
SILEX**



0751-08  
**MARACAS MI -  
CENDRE**



0751-09  
**MARACAS MI -  
SALINES**

**MARACAS M1 - SANGUINE**

0751-05

