

# LELIEVRE

PARIS

## CLUB M1 - ALEZAN

0797-02



Club is a two-tone fabric with a small pattern inspired by a gentlemen's cloakroom with an equestrian feel. The clean, dry weft is reminiscent of woven horsehair, and the untreated look is accentuated by a range of natural colours. Use for hardwearing seating, accessories and curtains.

Collection **COLLECTION 23**

Brand **LELIEVRE PARIS CONTRACT**

### TECHNICAL DATA

Composition **Polyester FR 100%**

Width **140 cm**

Repeat cut **No**

Drop match **No**

Care 

Uses 

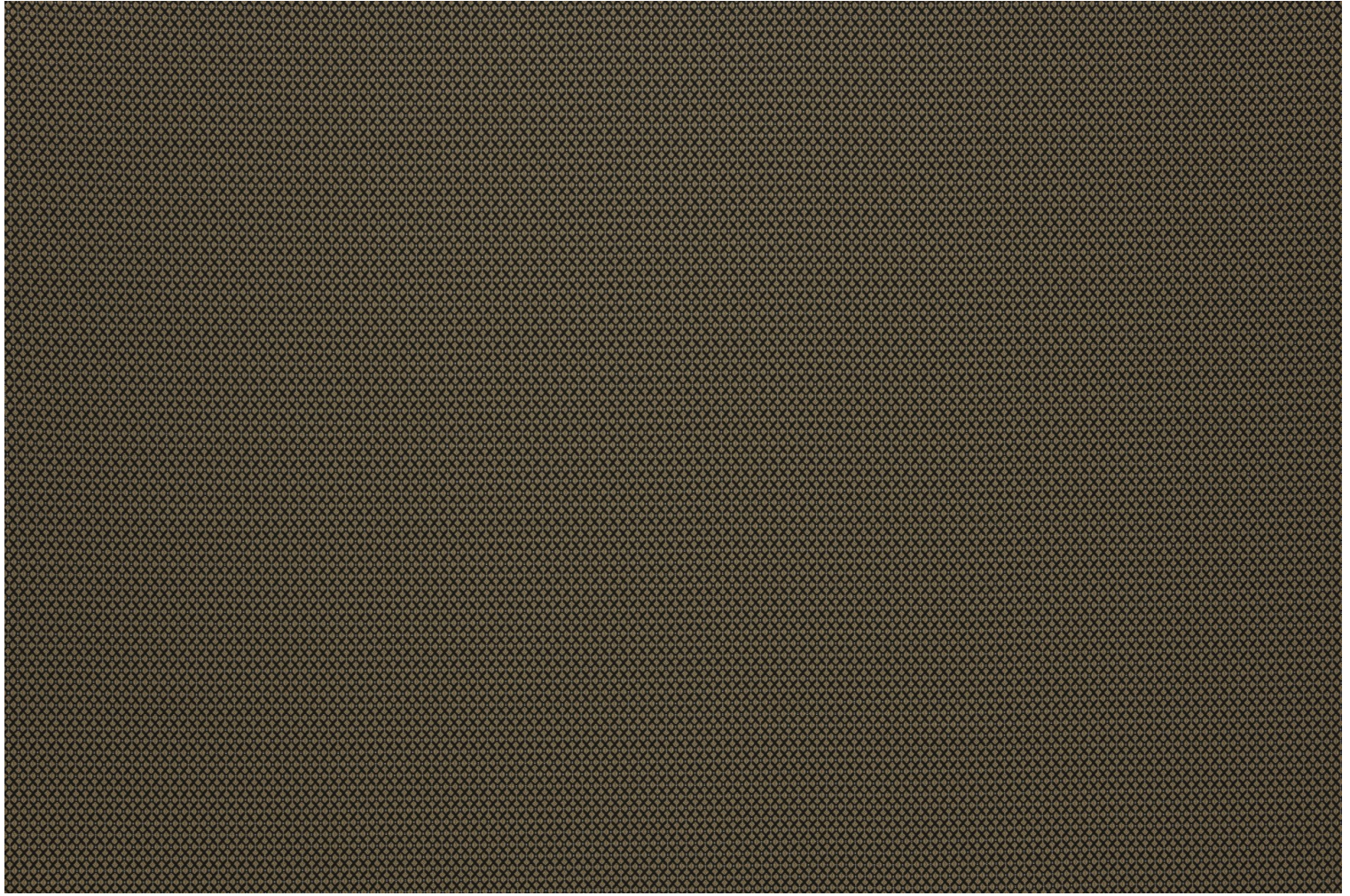
Martindale test **60 000 T**

Weight / Linear metre **570 g**

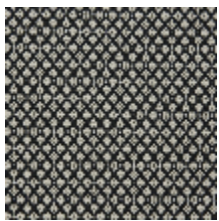
Fire rating **M1**

# LELIEVRE

PARIS



## Available colours



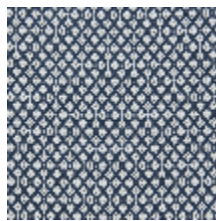
0797-01  
**CLUB M1 -  
PANGARÉ**



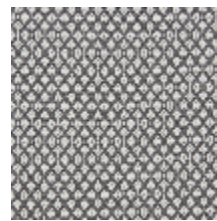
0797-02  
**CLUB M1 -  
ALEZAN**



0797-03  
**CLUB M1 - BAI**



0797-04  
**CLUB M1 -  
MARINE**



0797-05  
**CLUB M1 - ROUAN**  
\*



0797-06  
**CLUB M1 -  
CREMELLO**

**CLUB MI - ALEZAN**

0797-02

