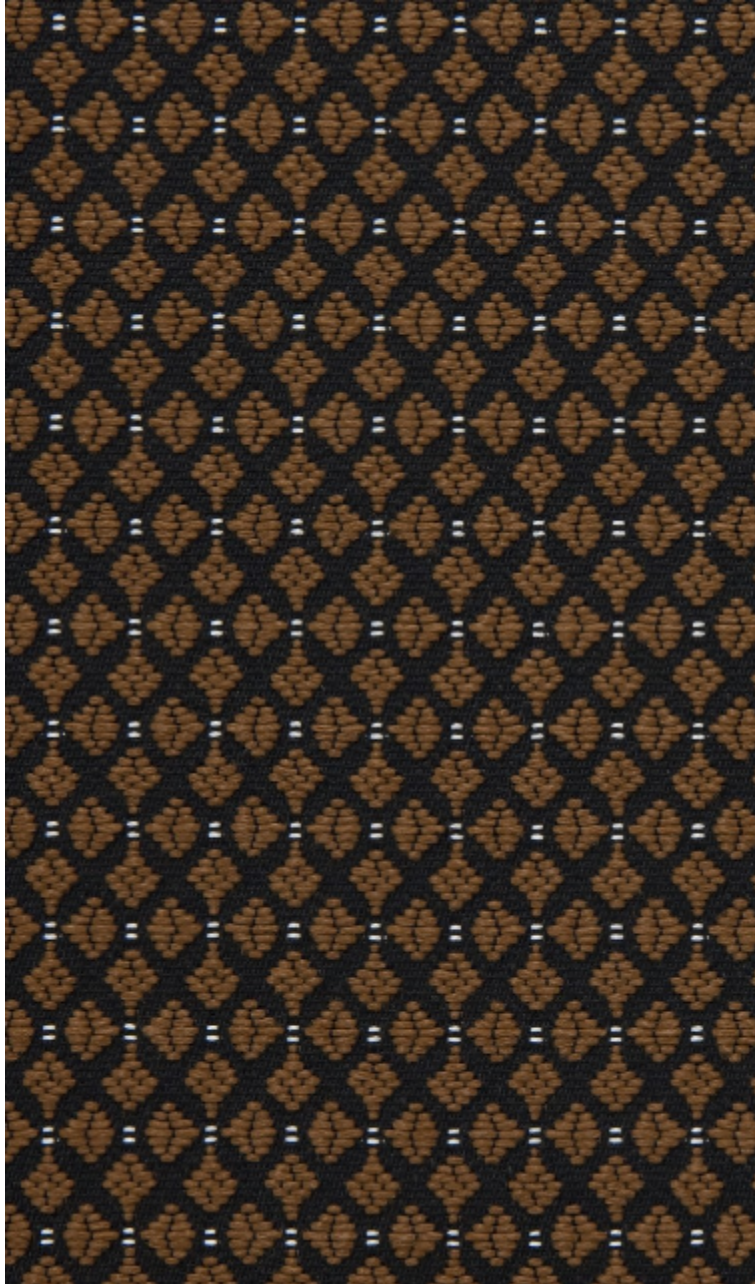


# LELIEVRE

PARIS

## CLUB M1 - BAI

0797-03



Club is a two-tone fabric with a small pattern inspired by a gentlemen's cloakroom with an equestrian feel. The clean, dry weft is reminiscent of woven horsehair, and the untreated look is accentuated by a range of natural colours. Use for hardwearing seating, accessories and curtains.

---

Collection	COLLECTION 23
------------	---------------

---

Brand	LELIEVRE CONTRACT
-------	-------------------

---

### TECHNICAL DATA

---

Composition	Polyester FR 100%
-------------	-------------------

---

Width	140 cm
-------	--------


---

Repeat cut	No
------------	----

---

Drop match	No
------------	----

---

Care	   
------	---

---

Uses	   
------	---

---

Martindale test	60 000 T
-----------------	----------

---

Weight / Linear metre	570 g
-----------------------	-------

---

Fire rating	M1
-------------	----

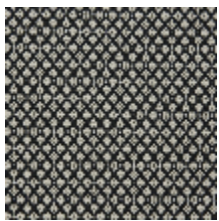
---

# LELIEVRE

PARIS



## Available colours



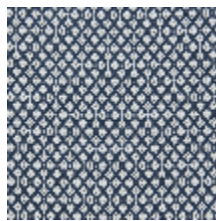
0797-01  
**CLUB M1 -  
PANGARÉ**



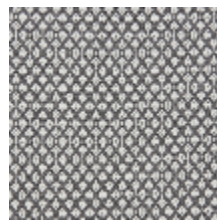
0797-02  
**CLUB M1 -  
ALEZAN**



0797-03  
**CLUB M1 - BAI**



0797-04  
**CLUB M1 -  
MARINE**



0797-05  
**CLUB M1 - ROUAN**



0797-06  
**CLUB M1 -  
CREMELLO**

# LELIEVRE

PARIS

## CLUB MI - BAI

0797-03

