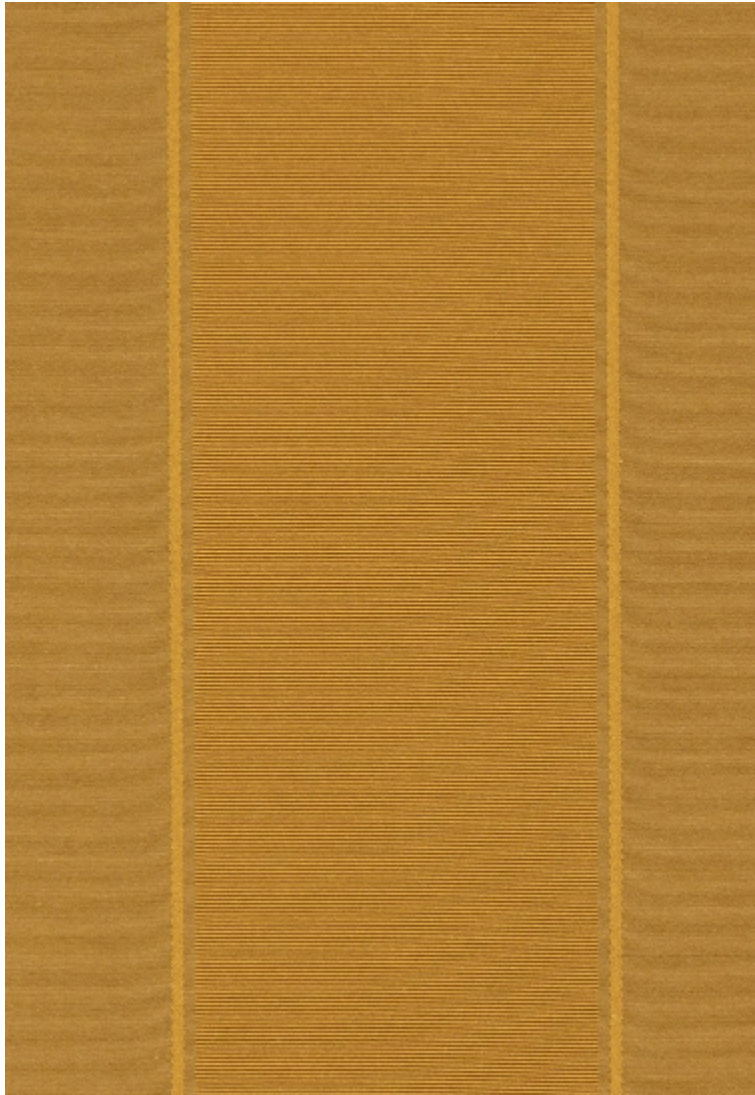


**FONTENAY - AMBRE**

1679-07



Sobriété et raffinement caractérisent ce beau gourgouran soie et coton. Brillances et matité alternent dans un rythme élégant de satin et d'ottoman souligné de fins filets ciselés. Une palette de 19 coloris assortis à tous grands classiques, pour la tenture, le rideau ou le petit siège.

---

Collection	PATRIMOINE
------------	------------

---

Marque	TASSINARI & CHATEL
--------	--------------------

---

## FICHE TECHNIQUE

---

Composition	Coton 57% - Soie 43%
-------------	----------------------

---

Largeur	140 cm
---------	--------

---

Coupe au raccord	Non
------------------	-----


---

Raccord sauté	Non
---------------	-----

---

Entretien	   
-----------	---

---

Utilisations	   
--------------	---

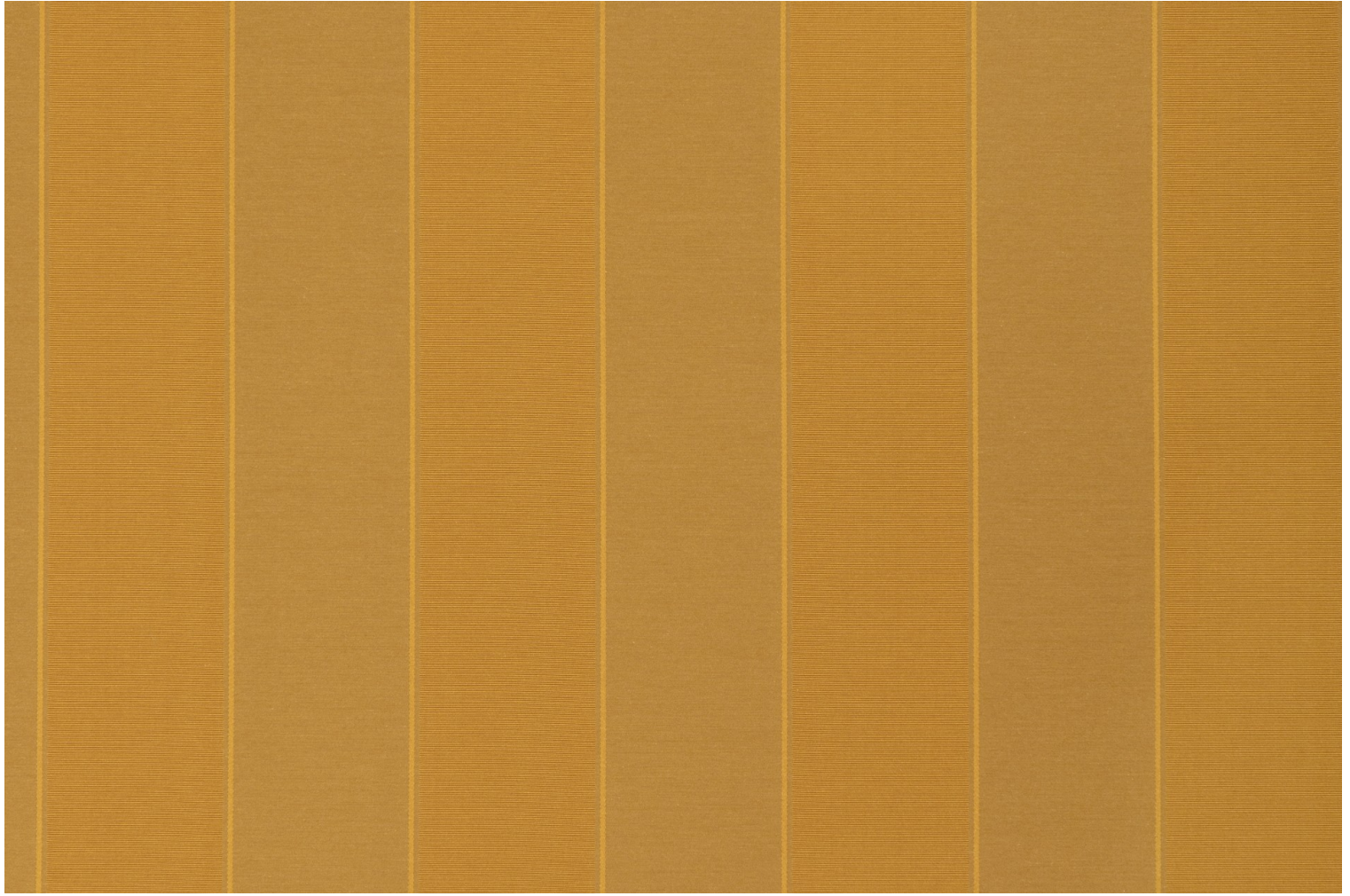
---

Poids ML	240 g
----------	-------

---

# LELIEVRE

PARIS

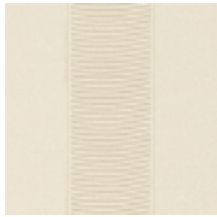


[lelievrepairs.com](http://lelievrepairs.com)  
[contact@lelievrepairs.com](mailto:contact@lelievrepairs.com)

# LELIEVRE

PARIS

## Coloris disponibles



1679-01  
**FONTENAY -  
ALBATRE**



1679-02  
**FONTENAY -  
IVOIRE**



1679-03  
**FONTENAY -  
PLATINE \***



1679-04  
**FONTENAY -  
CHAMPAGNE**



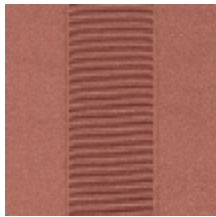
1679-06  
**FONTENAY -  
BOUTON D'OR**



1679-07  
**FONTENAY -  
AMBRE**



1679-09  
**FONTENAY -  
RUBIS**



1679-10  
**FONTENAY -  
ROSE ANCIEN**



1679-11  
**FONTENAY -  
POUDRE**



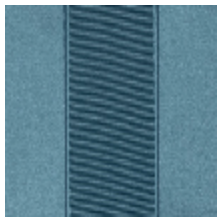
1679-12  
**FONTENAY -  
RAMIER**



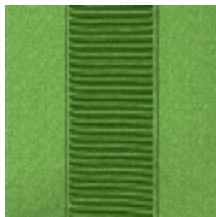
1679-14  
**FONTENAY -  
MACARON**



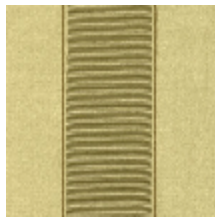
1679-15  
**FONTENAY -  
AMETHYSTE**



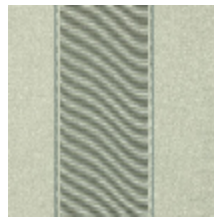
1679-16  
**FONTENAY -  
FAIENCE**



1679-17  
**FONTENAY -  
MYRTE**



1679-18  
**FONTENAY -  
AMANDE**



1679-19  
**FONTENAY -  
CELADON**

**FONTENAY - AMBRE**

1679-07

