

## SORGHO - PIMENT



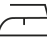




3249-07



SORGHO, une bouclette à l'effet tweed, avec un fil chenillé très texturé, se distingue par sa souplesse et sa douceur. Ce tissu, par ses riches mélanges de couleurs, évoque les grains et les épices, offrant une matière profonde, déclinée dans une palette chaleureuse et minérale.

Collection	CONTRÉE SAUVAGE
Marque	LELIÈVRE PARIS CONTRACT

### FICHE TECHNIQUE

Type	Jacquard
Composition	Polyester FR 100%
Largeur	140 cm
Coupe au raccord	Non
Raccord sauté	Non
Entretien	  
Utilisations	   
Test Martindale	50 000 T
Poids ML	695 g
Code feu	M1 - EN1021-1&2



# LELIEVRE

PARIS

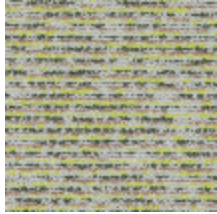




# LELIEVRE

PARIS

## Coloris disponibles



3249-01  
**SORGHO -  
BERGAMOTTE**



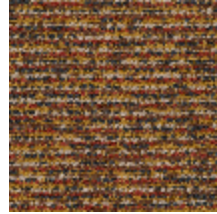
3249-02  
**SORGHO - GALET**



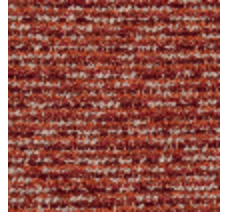
3249-03  
**SORGHO -  
NATUREL**



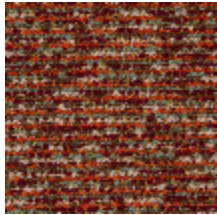
3249-04  
**SORGHO - CAMEL**



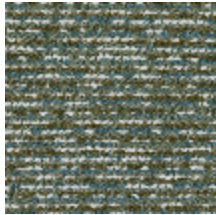
3249-05  
**SORGHO - EPICES**



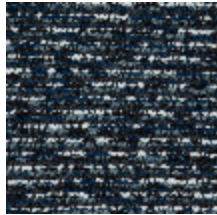
3249-06  
**SORGHO -  
PAPRIKA**



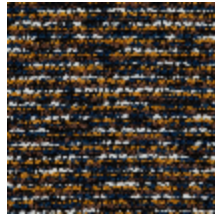
3249-07  
**SORGHO -  
PIMENT**



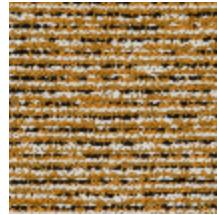
3249-08  
**SORGHO -  
AGAVE**



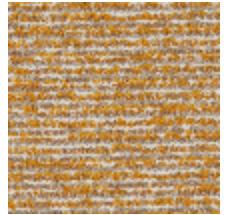
3249-09  
**SORGHO - ENCRE**



3249-10  
**SORGHO - NUIT**



3249-11  
**SORGHO -  
CURCUMA**



3249-12  
**SORGHO - OCRE**



3249-13  
**SORGHO -  
BRONZE**



**SORGHO - PIMENT**

3249-07

