

**MACRAME - NATUREL**

3491-01



Jacquard relié dont l'inspiration "classique" apaise.

---

Collection **POP ROCK**

---

Marque **JEAN PAUL GAULTIER**

---

**FICHE TECHNIQUE**

---

Composition **Viscose 70% - Polyester 30%**

---

Largeur **140 cm**

---

Coupe au raccord **Non**

---

Raccord vertical **47 cm**

---

Raccord horizontal **35 cm**

---

Raccord sauté **Non**

---

Entretien    

---

Utilisations   

---

Test Martindale **25 000 T**

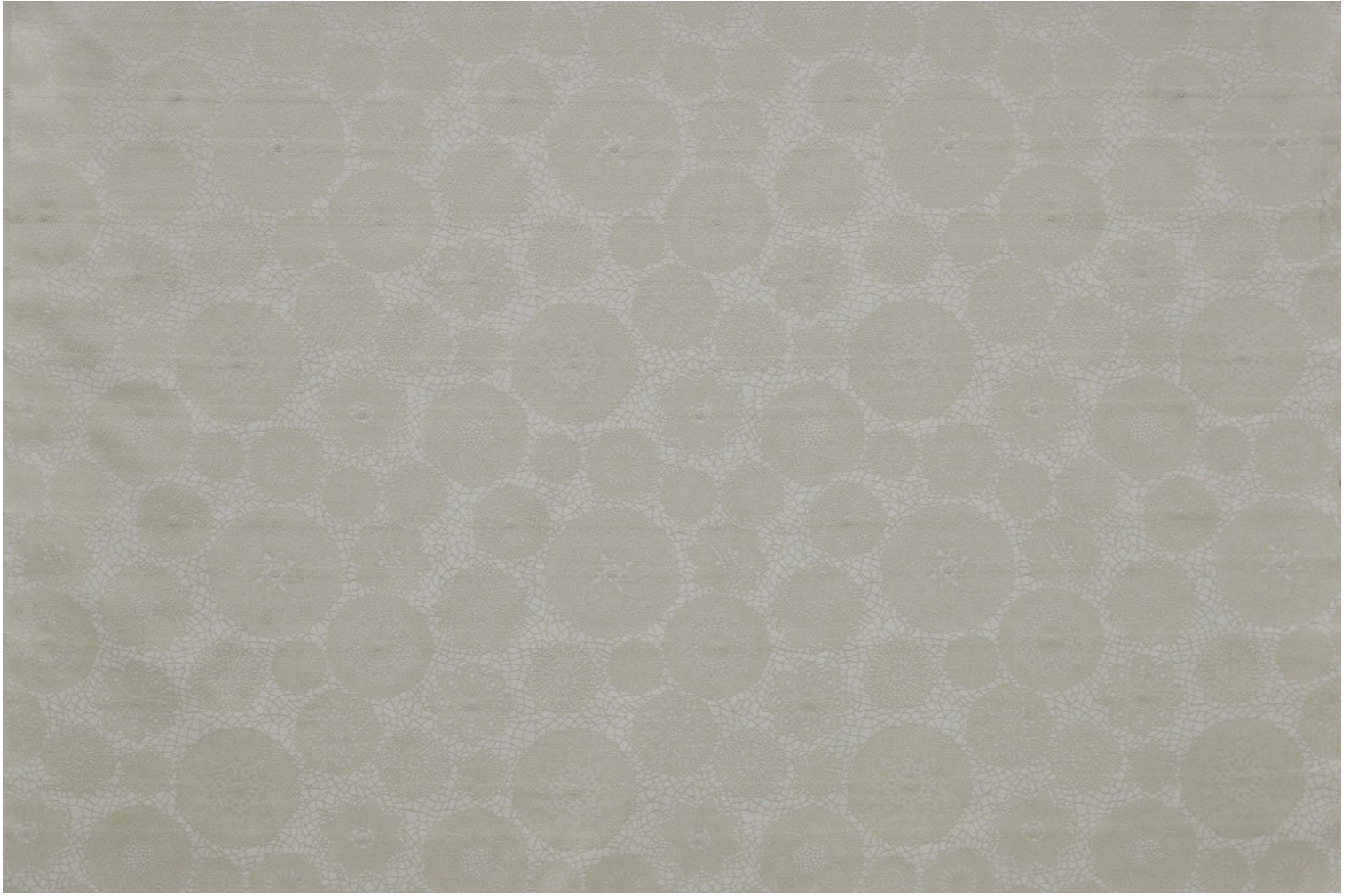
---

Poids ML **742 g**

---

# LELIEVRE

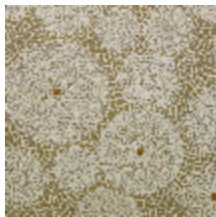
PARIS



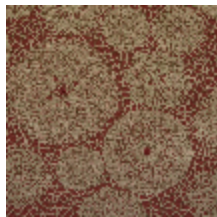
## Coloris disponibles



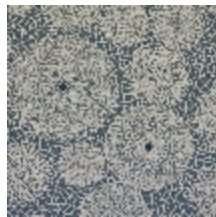
3491-01  
**MACRAME -  
NATUREL**



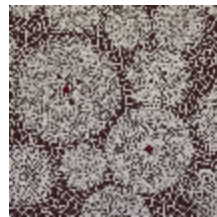
3491-02  
**MACRAME -  
POLLEN**



3491-03  
**MACRAME -  
BRIQUE**



3491-04  
**MACRAME - BLEU**



3491-05  
**MACRAME -  
BORDEAUX**



3491-06  
**MACRAME - NOIR**



**MACRAME - NATUREL**

3491-01

