

BREST - NOIR

3506-02



De la classique marinière JPG aux marins du monde, il ne manquait qu'un jacquard outdoor...

Collection AUTOUR DU MONDE

Marque JEAN PAUL GAULTIER

FICHE TECHNIQUE

Composition 50% Acrylique - 50% Polypropylène






Largeur 138 cm

Coupe au raccord Non

Raccord vertical 3 cm

Raccord sauté Non

Entretien    

Utilisations     

Test Martindale 20 000 T

Poids ML 421 g

LELIEVRE

PARIS

LELIEVRE

PARIS

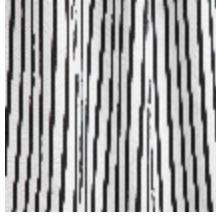


lelievreparis.com
contact@lelievreparis.com

Coloris disponibles



3506-01
BREST - INDIGO



3506-02
BREST - NOIR

BREST - NOIR

3506-02

