

**MYOSOTIS - ENCRE**









4262-07



Issu d'une archive Quenin, MYOSOTIS représente avec ses adorables petites fleurs l'idée de la collection Belle Époque, celle de moderniser des classiques avec des couleurs audacieuses et une subtile brillance. Composé principalement de coton et de lin, ce tissu est tissé dans notre manufacture de Panissières (EPV).

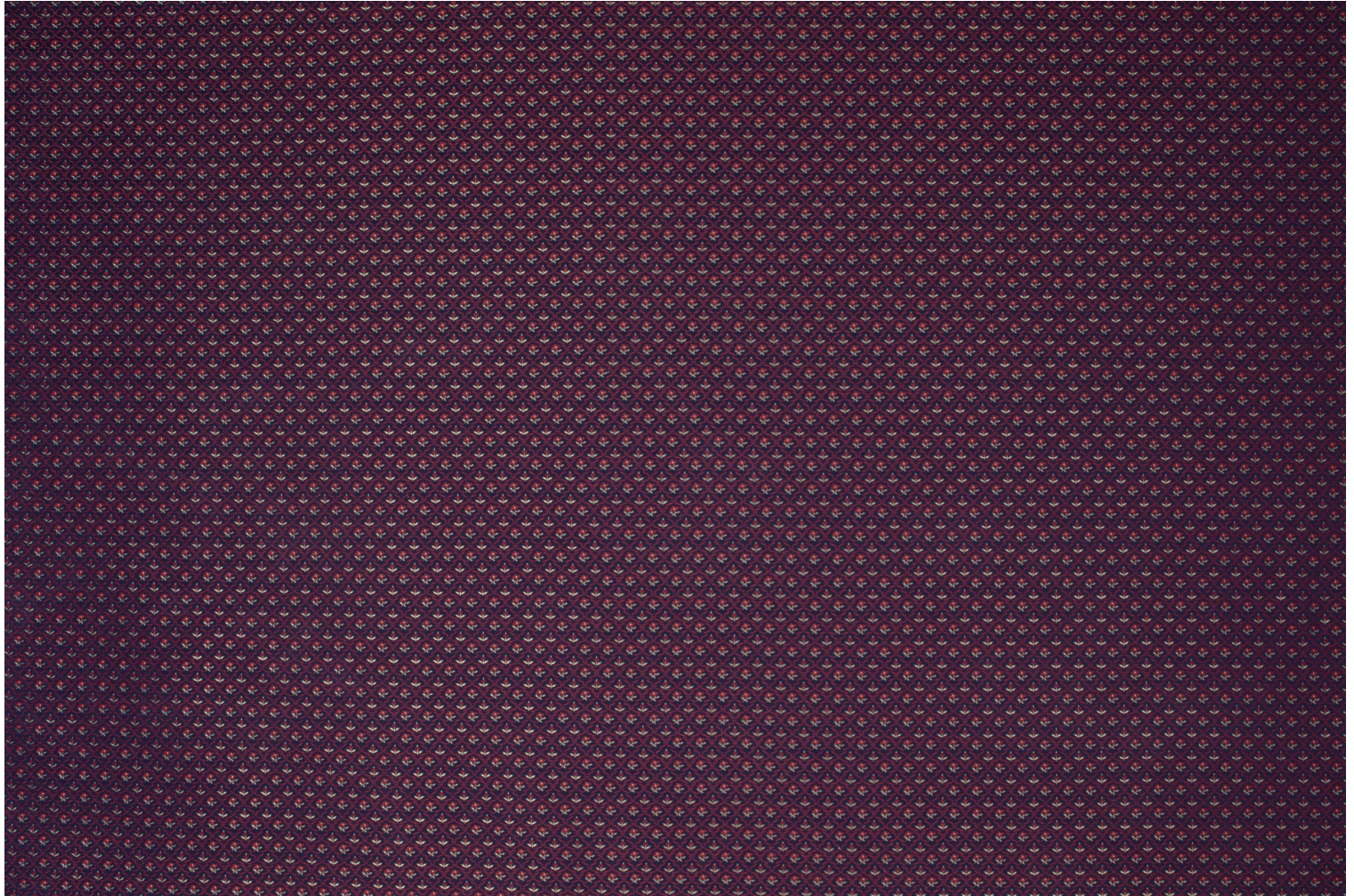
Collection	BELLE ÉPOQUE
Marque	QUENIN

## FICHE TECHNIQUE

Composition	Coton 34% Lin 30% Viscose 24% Polyamide 12%
Largeur	144 cm
Coupe au raccord	Non
Raccord vertical	3 cm
Raccord horizontal	3 cm
Raccord sauté	Non
Entretien	   
Utilisations	   
Test Martindale	20 000 T
Poids ML	448 g

# LELIEVRE

PARIS

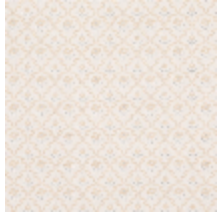


[lelievrepairs.com](http://lelievrepairs.com)  
[contact@lelievrepairs.com](mailto:contact@lelievrepairs.com)

# LELIEVRE

PARIS

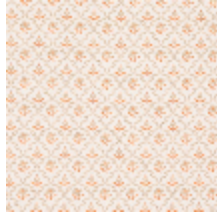
## Coloris disponibles



4262-01  
**MYOSOTIS -  
NACRE**



4262-02  
**MYOSOTIS -  
NATTIER**



4262-03  
**MYOSOTIS -  
CAPUCINE**



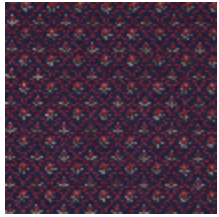
4262-04  
**MYOSOTIS -  
LAURIER**



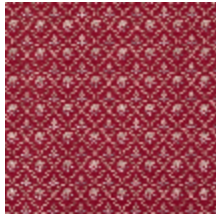
4262-05  
**MYOSOTIS -  
DORÉ**



4262-06  
**MYOSOTIS - BUIS**



4262-07  
**MYOSOTIS -  
ENCRE**



4262-08  
**MYOSOTIS -  
GRIOTTE**

**MYOSOTIS - ENCRE**

4262-07

