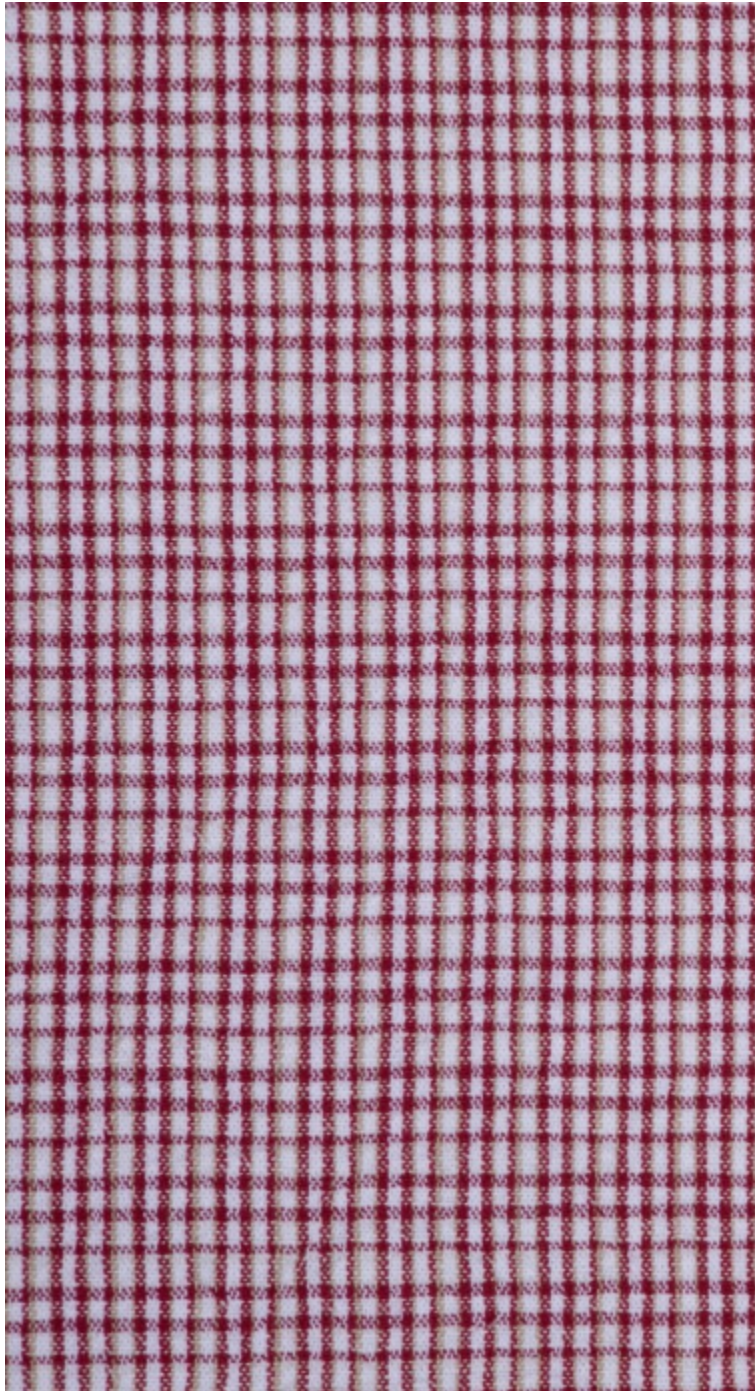


**CAMBREMER - GRIOTTE**

4265-08



Disponible en 15 coloris et composé à 100% de fibres naturelles (lin, coton et chanvre), CAMBREMER revisite le célèbre motif Vichy avec un effet vintage lavé, irrégulier dans son design. Avec son élégant tombé, il est parfait en rideau.

---

Collection	BELLE ÉPOQUE
------------	--------------

---

Marque	QUENIN
--------	--------

---

## FICHE TECHNIQUE

---

Type	Faux uni
------	----------

---

Composition	Coton 50% - Lin 25% - Chanvre 25%
-------------	--------------------------------------

---

Largeur	150 cm
---------	--------

---

Coupe au raccord	Non
------------------	-----

---

Raccord vertical	2 cm
------------------	------

---

Raccord horizontal	2 cm
--------------------	------

---

Raccord sauté	Non
---------------	-----

---

Entretien	  
-----------	---

---

Utilisations	   
--------------	---

---

Test Martindale	20 000 T
-----------------	----------

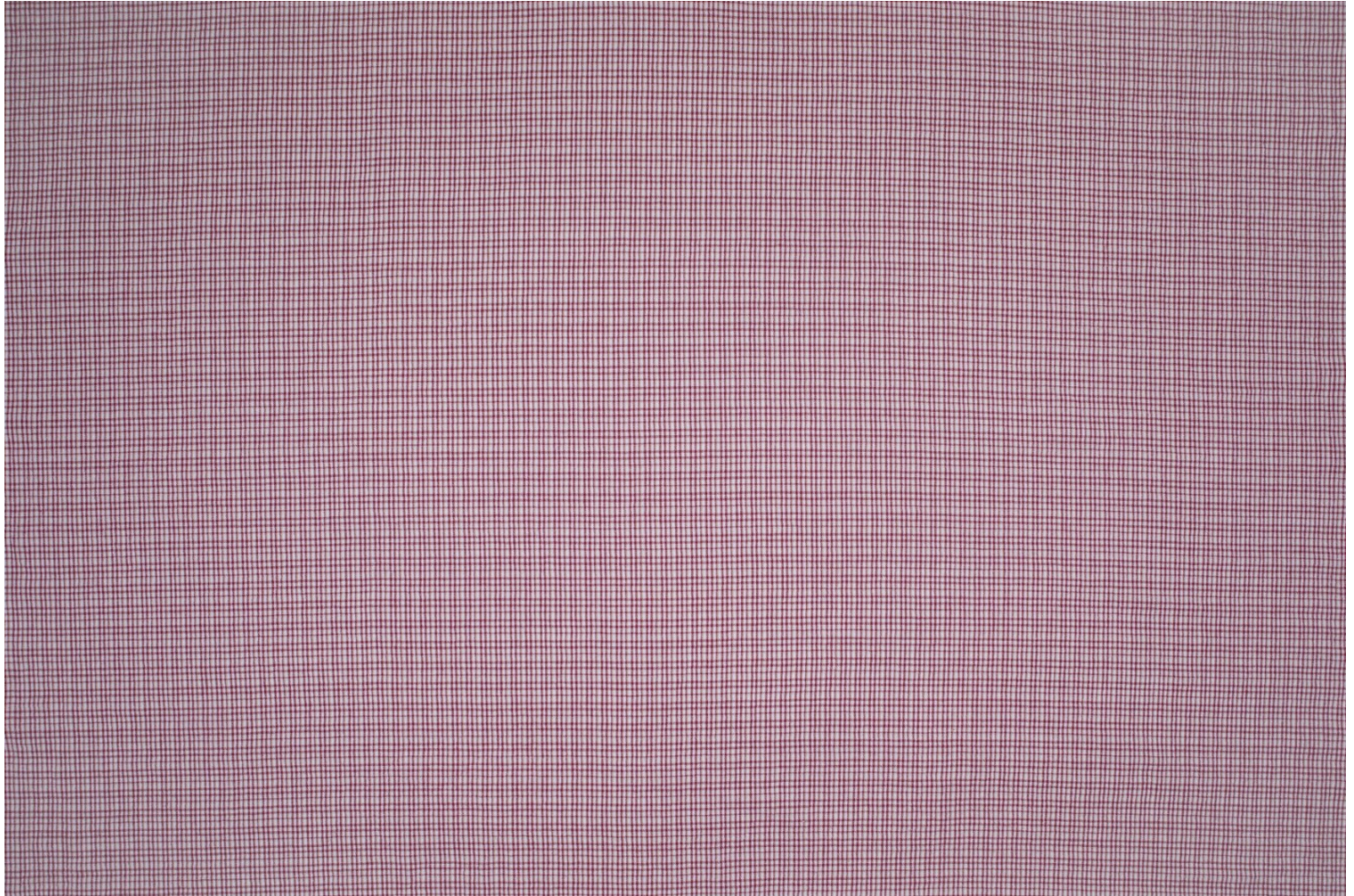
---

Poids ML	410 g
----------	-------

---

# LELIEVRE

PARIS



# LELIEVRE

PARIS

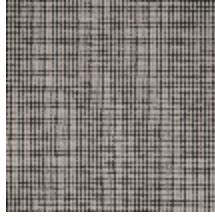
## Coloris disponibles



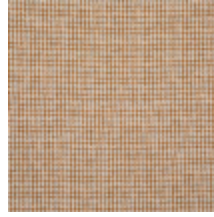
4265-01  
**CAMBREMER -  
PERLE**



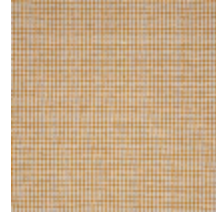
4265-02  
**CAMBREMER -  
BEIGE**



4265-03  
**CAMBREMER -  
ÉBÈNE**



4265-04  
**CAMBREMER -  
OCRE**



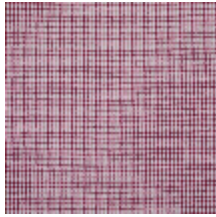
4265-05  
**CAMBREMER -  
TOURNESOL**



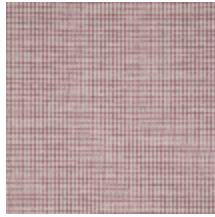
4265-06  
**CAMBREMER -  
CORNALINE**



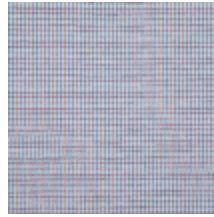
4265-07  
**CAMBREMER -  
BURGUNDY**



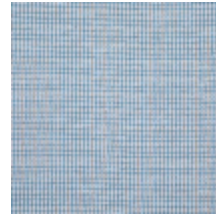
4265-08  
**CAMBREMER -  
GRIOTTE**



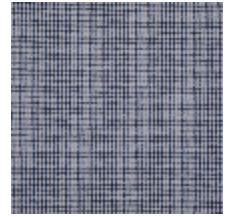
4265-09  
**CAMBREMER -  
PÉTALE**



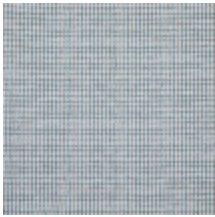
4265-10  
**CAMBREMER -  
PORCELAINE**



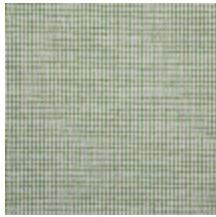
4265-11  
**CAMBREMER -  
CIEL**



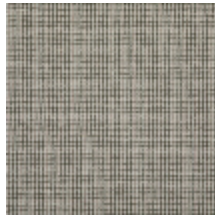
4265-12  
**CAMBREMER -  
ENCRE**



4265-13  
**CAMBREMER -  
AGAVE**



4265-14  
**CAMBREMER -  
PRAIRIE**



4265-15  
**CAMBREMER -  
KAKI**

**CAMBREMER - GRIOTTE**

4265-08

