

**TAÏGA - CHAMOIS**

0638-10



Ce magnifique drap de laine est une première chez Lelièvre Paris. Basic chic et intemporel, il est proposé dans une très large gamme de 23 coloris. Des gris chinés, de nombreux naturels, de beaux classiques chocolat, camel aux bleus indigos ou aubergine plus profond... Toute la gamme est adaptée aux sièges et rideaux, il a une excellente résistance au boulochage et abrasion. Il s'associe parfaitement à tous les autres tissus de la collection BOREALIS.



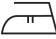




---

Collection	BOREALIS
Marque	LELIEVRE

---

## FICHE TECHNIQUE

---

Composition	Laine 80% - Polyamide 20%
Largeur	154 cm
Coupe au raccord	Non
Raccord sauté	Non
Entretien	   
Utilisations	  
Test Martindale	100 000 T
Poids ML	420 g
Code feu	EN1021-1&2

---

# LELIEVRE

PARIS





# LELIEVRE

PARIS

## Coloris disponibles



0638-01  
**TAÏGA - NATUREL**



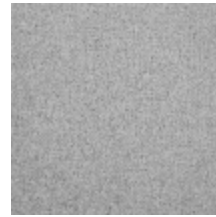
0638-02  
**TAÏGA - ECRU**



0638-03  
**TAÏGA - NEIGE**



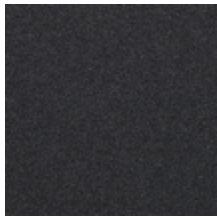
0638-04  
**TAÏGA - PERLE**



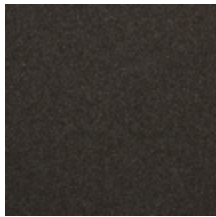
0638-05  
**TAÏGA - BRUME**



0638-06  
**TAÏGA -  
CHARTREUX**



0638-07  
**TAÏGA - FUSAIN**



0638-08  
**TAÏGA - VISON**



0638-09  
**TAÏGA - OURS**



0638-10  
**TAÏGA -  
CHAMOIS**



0638-11  
**TAÏGA - CAMEL**



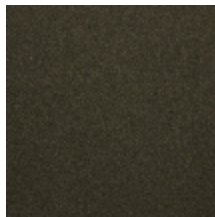
0638-12  
**TAÏGA - BLÉ**



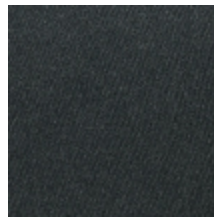
0638-13  
**TAÏGA - ANIS**



0638-14  
**TAÏGA - FORÊT**



0638-15  
**TAÏGA - KAKI**



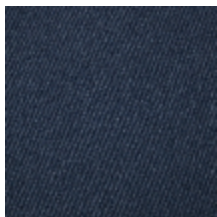
0638-16  
**TAÏGA - CÈDRE**



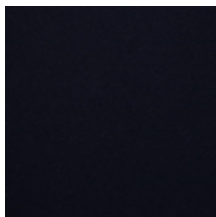
0638-17  
**TAÏGA - SAUGE**



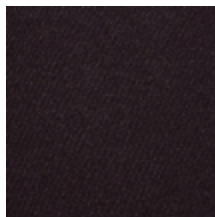
0638-18  
**TAÏGA - AZUR**



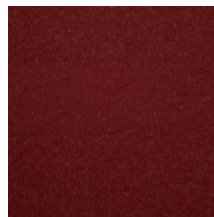
0638-19  
**TAÏGA - DENIM**



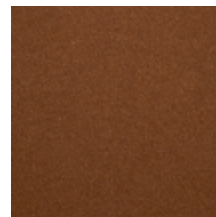
0638-20  
**TAÏGA - MARINE**



0638-21  
**TAÏGA -  
AUBERGINE**



0638-22  
**TAÏGA - PIMENT**



0638-23  
**TAÏGA - SAFRAN**

**TAÏGA - CHAMOIS**

0638-10

