

# LELIEVRE

PARIS

## ALIZE - SABLE









0651-02



Inspiré des Rêveries, le tissu Alizé tissé à la manufacture Lelièvre met en mouvance des volutes aussi délicates que légères. Le résultat : un jacquard où chaque volute a été traitée dans une multitude de petites armures graphiques et délicates. 5 coloris : écume, sable, nuage, indigo, ambre.

Collection	L'ENVOLÉE FANTASTIQUE
Marque	LELIEVRE

### FICHE TECHNIQUE

Composition	Viscose 53% - Coton 28% - Polyamide 19%
Largeur	137 cm
Coupe au raccord	Non
Raccord vertical	68 cm
Raccord horizontal	68 cm
Raccord sauté	Non
Entretien	   
Utilisations	   
Test Martindale	30 000 T
Poids ML	540 g

# LELIEVRE

PARIS



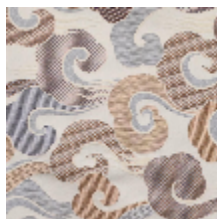
## Coloris disponibles



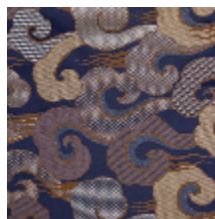
0651-01  
**ALIZE - ECUME**



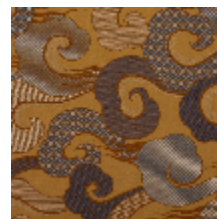
0651-02  
**ALIZE - SABLE**



0651-03  
**ALIZE - NUAGE**



0651-04  
**ALIZE - INDIGO**



0651-05  
**ALIZE - AMBRE**

**ALIZE - SABLE**

0651-02

