

KYRIELLE - JADE

0652-10



Fabriqué dans la manufacture Lelièvre, ce jacquard faux unis impressionne par sa technique avec, en trame, un fil légèrement irisé - doré, cuivré ou poudré - pour un rendu scintillant donnant l'impression d'une douce pluie.

Collection	L'ENVOLÉE FANTASTIQUE
------------	-----------------------

Marque	LELIEVRE
--------	----------

FICHE TECHNIQUE

Composition	Coton 56% - Polyester 26% - Polyamide 9% - PC 9%
-------------	---


Largeur	142 cm
---------	--------


Coupe au raccord	Non
------------------	-----

Raccord vertical	16 cm
------------------	-------

Raccord horizontal	18 cm
--------------------	-------

Raccord sauté	Non
---------------	-----

Entretien	   
-----------	---

Utilisations	   
--------------	---

Test Martindale	40 000 T
-----------------	----------

Poids ML	585 g
----------	-------

LELIEVRE

PARIS



lelievreparis.com
contact@lelievreparis.com

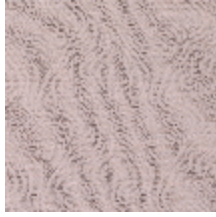
LELIEVRE

PARIS

Coloris disponibles



0652-01
**KYRIELLE -
ECUME**



0652-02
**KYRIELLE -
POUDRE**



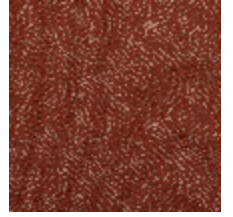
0652-03
KYRIELLE - DORE



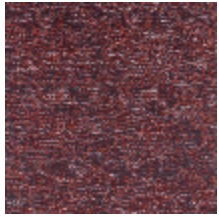
0652-04
KYRIELLE - MIEL



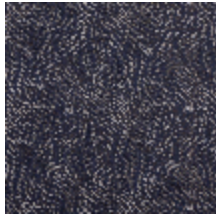
0652-05
**KYRIELLE -
AMBRE**



0652-06
**KYRIELLE -
TERRACOTTA**



0652-07
KYRIELLE - FIGUE



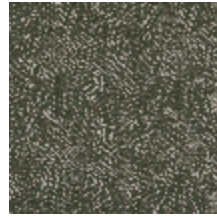
0652-08
**KYRIELLE -
INDIGO**



0652-09
**KYRIELLE -
GRAPHITE**



0652-10
KYRIELLE - JADE



0652-11
KYRIELLE - CEDRE

KYRIELLE - JADE

0652-10

