

ALULA - CELADON

0656-02



On appelle "alula" une partie du plumage de l'aile d'un oiseau. Ce petit jacquard, inspiré des plumages graphiques du grand jacquard, a été conçu et travaillé en camaïeu multicolore pour donner un effet de plume stylisée. 6 coloris : naturel, céladon, blush, sauge, indigo, ambre.

Collection	L'ENVOLÉE FANTASTIQUE
------------	-----------------------

Marque	LELIEVRE PARIS
--------	----------------

FICHE TECHNIQUE

Composition	Polyester 68% - Coton 26% - Polyamide 6%
-------------	---

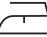
Largeur	145 cm
---------	--------

Coupe au raccord	Non
------------------	-----

Raccord vertical	7 cm
------------------	------

Raccord horizontal	9 cm
--------------------	------

Raccord sauté	Non
---------------	-----

Entretien	  
-----------	---

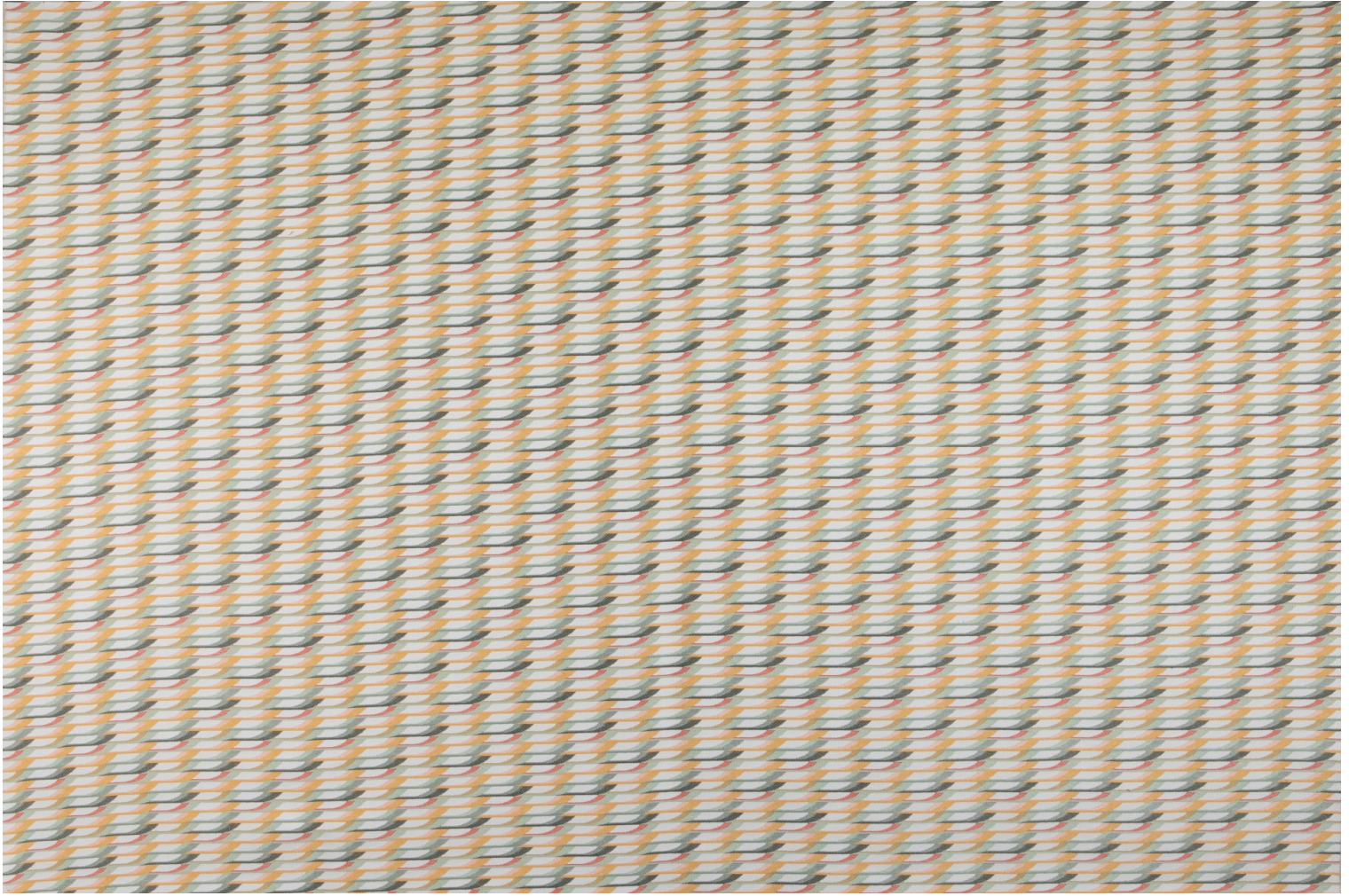
Utilisations	   
--------------	---

Test Martindale	40 000 T
-----------------	----------

Poids ML	800 g
----------	-------

LELIEVRE

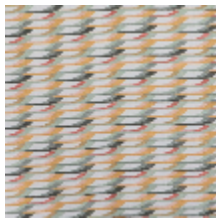
PARIS



Coloris disponibles



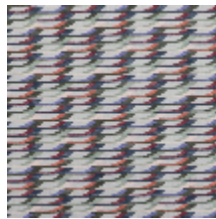
0656-01
ALULA - NATUREL



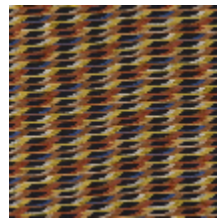
0656-02
**ALULA -
CELADON**



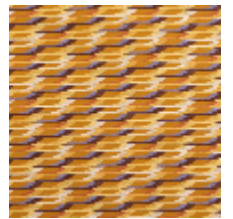
0656-03
ALULA - BLUSH



0656-04
ALULA - SAUGE



0656-05
ALULA - INDIGO



0656-06
ALULA - AMBRE

ALULA - CELADON

0656-02

