

COSTA - GENTIANE

1484-26



COSTA is a 100% linen fabric for mixed use with a superb, strong range of 35 colors, both subtle and deep, naturals and pastels and richer colors, warm and spicy that will make you want to travel. This quality of linen will astound fans of this natural fiber with its superb drape and supple handle. The entire range coordinates perfectly with the Résonance collection.

OEKO-TEX®
CONFIDENCE IN TEXTILES
STANDARD 100 

 MASTERS
OF
LINEN®
100% MADE IN EUROPE

Collection	RESONANCE
------------	-----------

Brand	LELIEVRE
-------	----------


TECHNICAL DATA


Composition	Linen 100%
-------------	------------

Width	145 cm
-------	--------

Repeat cut	No
------------	----

Drop match	No
------------	----

Care	   
------	---

Uses	  
------	---

Martindale test	30 000 T
-----------------	----------

Weight / Linear metre	700 g
-----------------------	-------

Fire rating	EN1021-1&2
-------------	------------

LELIEVRE

PARIS



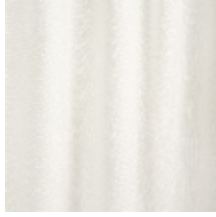
LELIEVRE

PARIS

Available colours



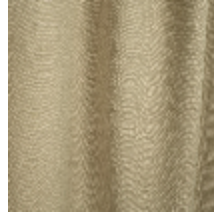
1484-01
COSTA - BLANC



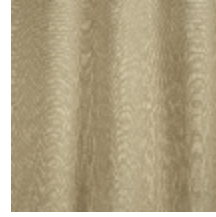
1484-02
COSTA - ÉCRU



1484-03
COSTA - BEIGE



1484-04
COSTA - LIN



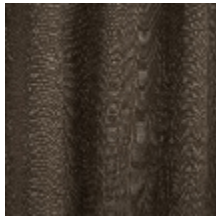
1484-05
COSTA - SAVANE



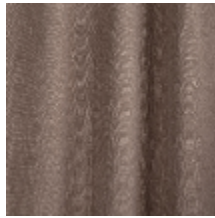
1484-06
COSTA - CAMEL



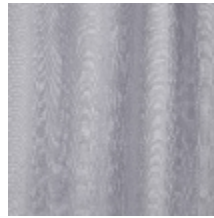
1484-07
**COSTA -
CHATAIN**



1484-08
COSTA - TAUPE



1484-09
**COSTA -
TOURTERELLE**



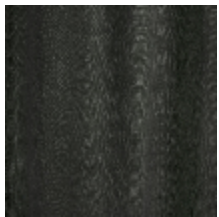
1484-10
COSTA - GLYCINE



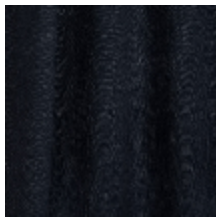
1484-11
COSTA - PERLE



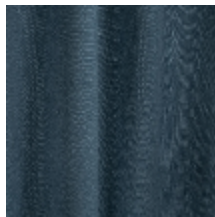
1484-12
COSTA - SOURIS



1484-13
**COSTA -
ANTHRACITE**



1484-14
COSTA - MARINE



1484-15
COSTA - OCÉAN



1484-16
COSTA - ORANGE



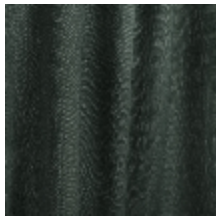
1484-17
COSTA - ACQUA



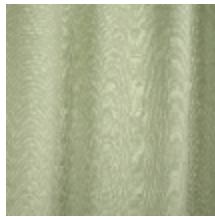
1484-18
COSTA - OPALINE



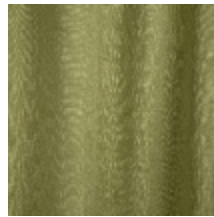
1484-19
COSTA - AGAVE



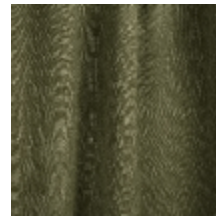
1484-20
COSTA - CEDRE



1484-21
**COSTA -
CELADON**



1484-22
**COSTA -
AMANDE**



1484-23
COSTA - KAKI



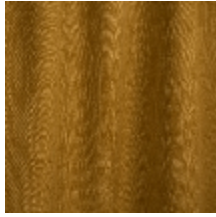
1484-24
COSTA - BRONZE

LELIEVRE

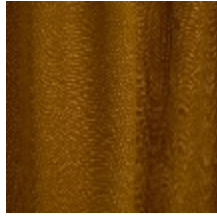
PARIS



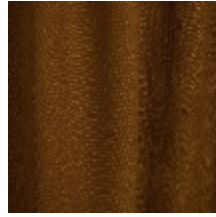
1484-25
COSTA - POLLEN



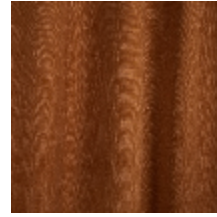
1484-26
COSTA - GENTIANE



1484-27
COSTA - CURRY



1484-28
COSTA - OCRE



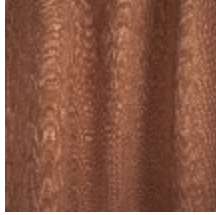
1484-29
COSTA - TERRACOTTA



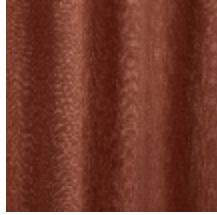
1484-30
COSTA - BRIQUE



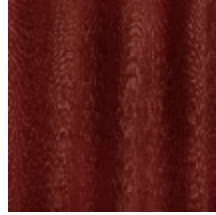
1484-31
COSTA - POUFRE



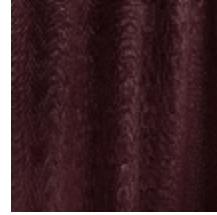
1484-32
COSTA - VIEUX ROSE



1484-33
COSTA - BLUSH



1484-34
COSTA - TOMETTE



1484-35
COSTA - BORDEAUX

COSTA - GENTIANE

1484-26

