

GALERIE - TOURTERELLE

1489-03



GALERIE is a very contemporary mat cotton epingle velvet, punctuated by large flat areas of colour embellished with a more contrasting graphic stripe. It offers a nice play of texture and harmoniously mixes with the patterns from the collection.

Collection	RESONANCE
------------	-----------

Brand	LELIÈVRE
-------	----------

TECHNICAL DATA

Composition	Cotton 100%
-------------	-------------

Width	141 cm
-------	--------

Repeat cut	No
------------	----

Horizontal repeat	17 cm
-------------------	-------

Drop match	No
------------	----

Care	   
------	---

Uses	  
------	---

Martindale test	70 000 T
-----------------	----------

Weight / Linear metre	940 g
-----------------------	-------

LELIEVRE

PARIS



lelievrepairs.com
contact@lelievrepairs.com

LELIEVRE

PARIS

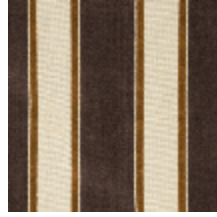
Available colours



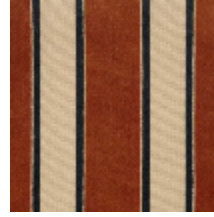
1489-01
**GALERIE -
NATUREL**



1489-02
GALERIE - CAMEL



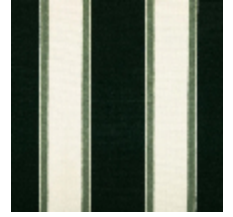
1489-03
**GALERIE -
TOURTERELLE**



1489-04
**GALERIE -
TERRACOTTA**



1489-05
**GALERIE -
GREMAT**



1489-06
GALERIE - FORÊT



1489-07
**GALERIE -
MARINE**

GALERIE - TOURTERELLE

1489-03

