

## LES ROSES – CELADON

1580-01



Reissue of the Les Roses lampas, created in 1911 by Paul Follot, an Art Deco decorator. Designed to combine luxury and modernity, this design was commissioned in 1924 for the Grand Luxe salons of the Paris ocean liner. Made of 100% silk, this three-ply lampas features a bouquet of fully bloomed roses set against a deep background. The fabric is available in an ebony background with salmon-pink roses, faithful to the historical document. A celadon and golden interpretation, luminous and delicate, reimagines the work with a contemporary breath.

Brand	TASSINARI & CHATEL
-------	--------------------

## TECHNICAL DATA

Type	Damasks & Lampas
------	------------------

Composition	Silk 100%
-------------	-----------


Width	129 cm
-------	--------

Repeat cut	No
------------	----

Vertical repeat	31 cm
-----------------	-------

Horizontal repeat	65 cm
-------------------	-------

Half drop match	No
-----------------	----

Uses	   
------	---

Weight / Linear metre	380 g
-----------------------	-------

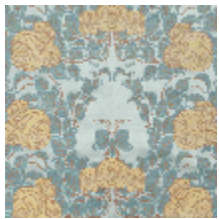


# LELIEVRE

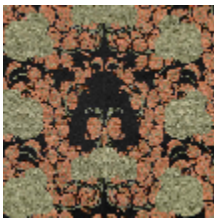
PARIS



## Available colours



1580-01  
**LES ROSES -  
CELADON**



1580-02  
**LES ROSES - NOIR**



**LES ROSES – CELADON**

1580-01

