

LELIEVRE

PARIS

GUIMET - RUBIS

1665-07



This beautiful 19th century lampas imitates the style of Chinese cloisonné enamel. The scintillating colours characterise the rich interiors typical of the Napoleonic period. In the mid 19th century the east heavily influenced the decorative arts. Emile Guimet, after whom this design is named, was an industrialist in Lyon and a passionate collector of Asian decorative arts. His collections formed the basis of the Guimet Museum of Asian Art in Paris.

| | |
|------------|------------|
| Collection | PATRIMOINE |
|------------|------------|

| | |
|-------|--------------------|
| Brand | TASSINARI & CHATEL |
|-------|--------------------|

TECHNICAL DATA

| | |
|-------------|-----------------------|
| Composition | Silk 63% - Cotton 37% |
|-------------|-----------------------|

| | |
|-------|--------|
| Width | 130 cm |
|-------|--------|

| | |
|------------|----|
| Repeat cut | No |
|------------|----|

| | |
|-----------------|-------|
| Vertical repeat | 16 cm |
|-----------------|-------|

| | |
|------------|----|
| Drop match | No |
|------------|----|

| | |
|------|---|
| Care |     |
|------|---|

| | |
|------|---|
| Uses |     |
|------|---|

| | |
|-----------------------|-------|
| Weight / Linear metre | 325 g |
|-----------------------|-------|

LELIEVRE

PARIS



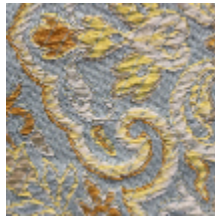
Available colours



1665-01
GUMET - IVOIRE



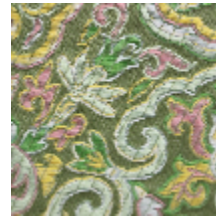
1665-02
GUMET - OR



1665-03
**GUMET -
NATTIER**



1665-04
GUMET - BOIS



1665-05
GUMET - VERT



1665-06
GUMET - ROUX



1665-07
GUMET - RUBIS

LELIEVRE

PARIS

GUIMET - RUBIS

1665-07

