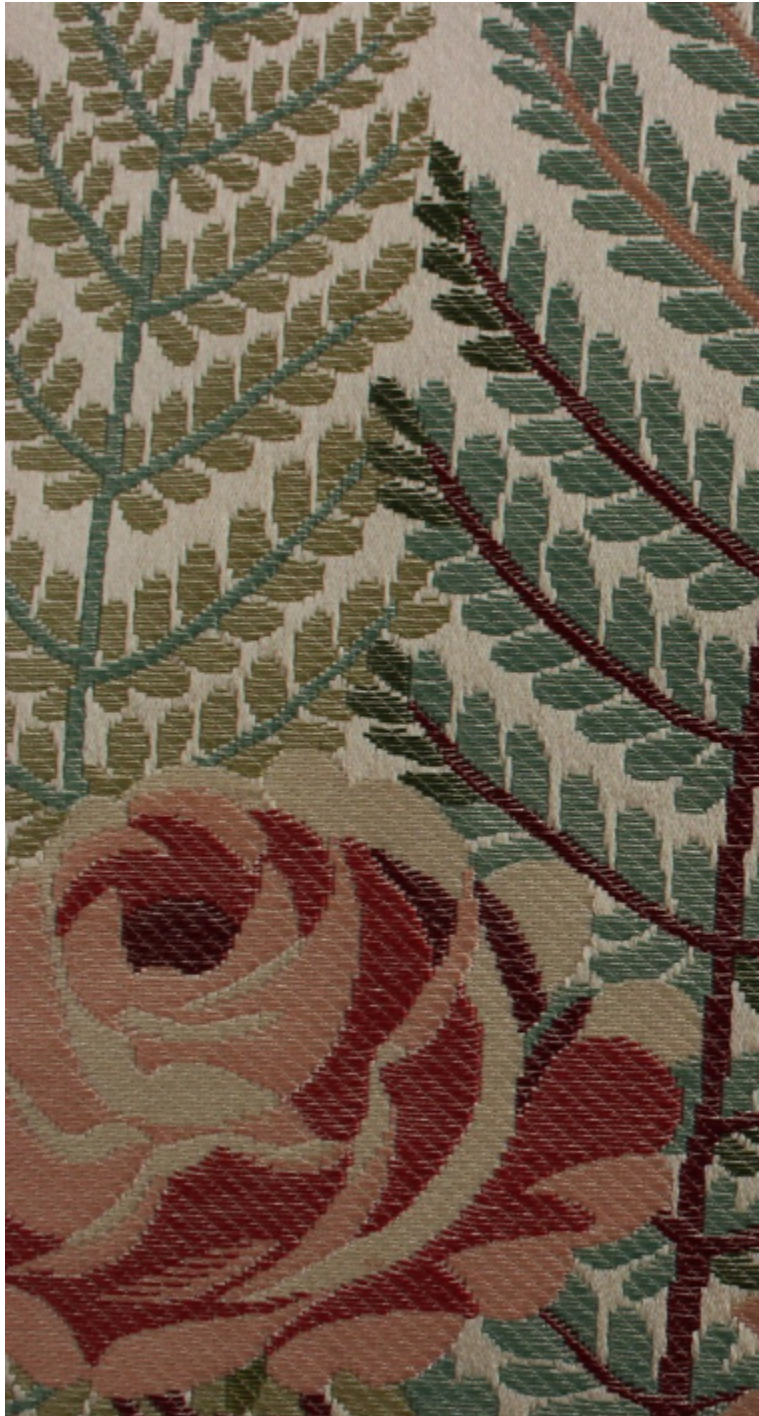


# LELIEVRE

PARIS

## MARLY - IVOIRE

1675-01



This fabric depicting a beautiful bouquet of roses and ferns in a oval wreath of gold foliage was created for the bedchamber of Louis XVI at the chateau de Versailles. Since 1985 this fabric has been rewoven as a brocart for the renovation of the bedchamber of King Louis XVI at the Chateau de Versailles. (Available also in Brocart quality 1680: MARLY BROCCART) Fabric to be cut by the repeat only

Collection EXCEPTION

Brand TASSINARI & CHATEL

### TECHNICAL DATA

Type Damasks & Lampas

Composition Silk 100%

Width 130 cm

Repeat cut Yes

Vertical repeat 155 cm

Half drop match No

Care   

Uses    

Weight / Linear metre 540 g

# LELIEVRE

PARIS



[lelievrepairs.com](http://lelievrepairs.com)  
[contact@lelievrepairs.com](mailto:contact@lelievrepairs.com)

**MARLY - IVOIRE**

1675-01

