

# LELIEVRE

PARIS

## FONTENAY - ALBATRE

1679-01



This beautiful cotton and silk satin and gourgouran stripe is refined and understated. A rhythmic and elegant alternation of satin and ottoman highlighted with a fine chiseled line. A range of 19 colours to complement the great classics, for walling, curtains and decorative upholstery.

---

|            |            |
|------------|------------|
| Collection | PATRIMOINE |
|------------|------------|

---

|       |                    |
|-------|--------------------|
| Brand | TASSINARI & CHATEL |
|-------|--------------------|

---

### TECHNICAL DATA

---

|             |                       |
|-------------|-----------------------|
| Composition | Cotton 57% - Silk 43% |
|-------------|-----------------------|

---

|       |        |
|-------|--------|
| Width | 140 cm |
|-------|--------|

---

|            |    |
|------------|----|
| Repeat cut | No |
|------------|----|

---

|            |    |
|------------|----|
| Drop match | No |
|------------|----|

---

|      |   |
|------|---|
| Care |     |
|------|---|

---

|      |   |
|------|---|
| Uses |     |
|------|---|

---

|                       |       |
|-----------------------|-------|
| Weight / Linear metre | 240 g |
|-----------------------|-------|

---

# LELIEVRE

PARIS



# LELIEVRE

PARIS

## Available colours



1679-01  
**FONTENAY -  
ALBATRE**



1679-02  
**FONTENAY -  
IVOIRE**



1679-03  
**FONTENAY -  
PLATINE \***



1679-04  
**FONTENAY -  
CHAMPAGNE**



1679-06  
**FONTENAY -  
BOUTON D'OR**



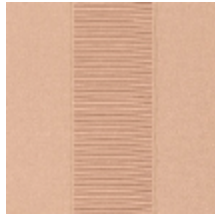
1679-07  
**FONTENAY -  
AMBRE**



1679-09  
**FONTENAY -  
RUBIS**



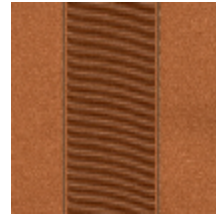
1679-10  
**FONTENAY -  
ROSE ANCIEN**



1679-11  
**FONTENAY -  
POUDRE**



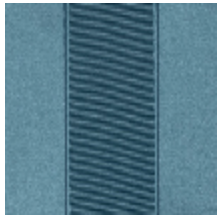
1679-12  
**FONTENAY -  
RAMIER**



1679-14  
**FONTENAY -  
MACARON**



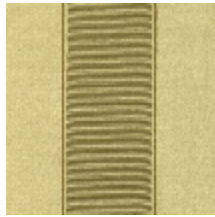
1679-15  
**FONTENAY -  
AMETHYSTE**



1679-16  
**FONTENAY -  
FAIENCE**



1679-17  
**FONTENAY -  
MYRTE**



1679-18  
**FONTENAY -  
AMANDE**



1679-19  
**FONTENAY -  
CELADON**

**FONTENAY - ALBATRE**

1679-01

