

LELIEVRE

PARIS

FONTENAY - AMBRE

1679-07



This beautiful cotton and silk satin and gourgouran stripe is refined and understated. A rhythmic and elegant alternation of satin and ottoman highlighted with a fine chiseled line. A range of 19 colours to complement the great classics, for walling, curtains and decorative upholstery.

Collection	PATRIMOINE
------------	------------

Brand	TASSINARI & CHATEL
-------	--------------------

TECHNICAL DATA

Composition	Cotton 57% - Silk 43%
-------------	-----------------------

Width	140 cm
-------	--------

Repeat cut	No
------------	----

Drop match	No
------------	----

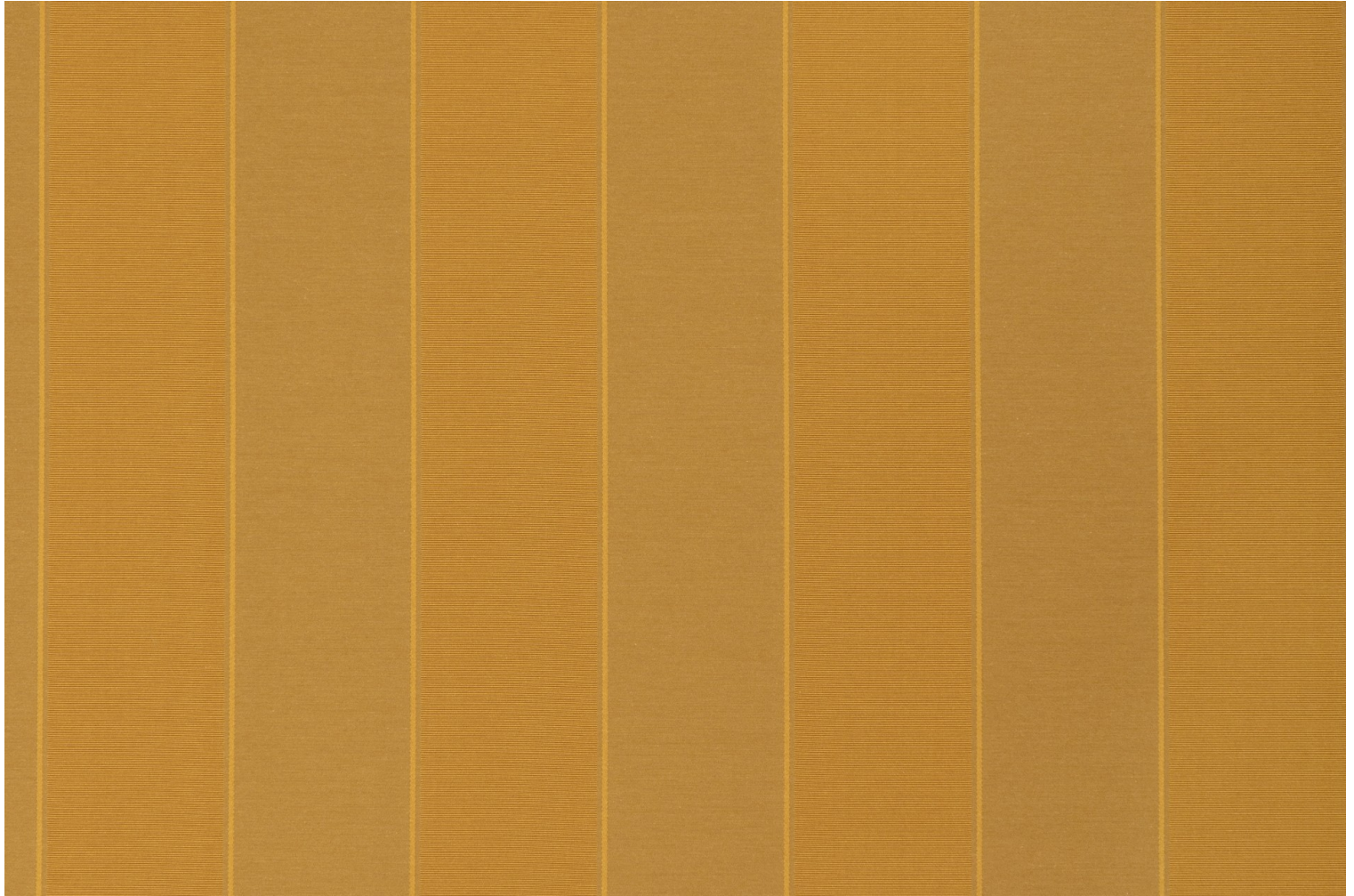
Care	   
------	---

Uses	   
------	---

Weight / Linear metre	240 g
-----------------------	-------

LELIEVRE

PARIS



lelievreparis.com
contact@lelievreparis.com

LELIEVRE

PARIS

Available colours



1679-01
**FONTENAY -
ALBATRE**



1679-02
**FONTENAY -
IVOIRE**



1679-03
**FONTENAY -
PLATINE ***



1679-04
**FONTENAY -
CHAMPAGNE**



1679-06
**FONTENAY -
BOUTON D'OR**



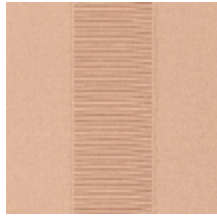
1679-07
**FONTENAY -
AMBRE**



1679-09
**FONTENAY -
RUBIS**



1679-10
**FONTENAY -
ROSE ANCIEN**



1679-11
**FONTENAY -
POUDRE**



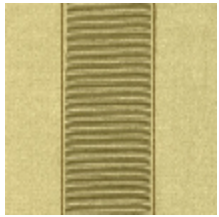
1679-12
**FONTENAY -
RAMIER**



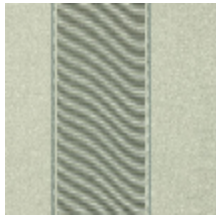
1679-14
**FONTENAY -
MACARON ***



1679-15
**FONTENAY -
AMETHYSTE**



1679-18
**FONTENAY -
AMANDE**



1679-19
**FONTENAY -
CELADON**

FONTENAY - AMBRE

1679-07

