

MANSART - CHATAIN

1681-06

LELIEVRE

PARIS



Lovers of sophisticated fabrics will be amazed by the quality of this chiselled velvet created by mechanical looms but with all the finesse of the original hand weaving. In the Régency style of Louis XIV, the generous decoration is characterised by flowers framed with foliage on a fine strié background. On Bemberg viscose in a luminous range of 6 brilliant colors. Initially woven in damask, this archive design was rewoven by our factory for the Château d' Asnières. In homage to the famous architect of the Château, we named the fabric Mansart. Number of colors: 6

Collection	PATRIMOINE
------------	------------

Brand	TASSINARI & CHATEL
-------	--------------------

TECHNICAL DATA

Composition	Cupro 52% - Cotton 48%
-------------	------------------------

Width	130 cm
-------	--------


Repeat cut	Yes
------------	-----

Vertical repeat	98 cm
-----------------	-------

Horizontal repeat	65 cm
-------------------	-------

Drop match	No
------------	----

Care	   
------	---

Uses	   
------	---

Martindale test	18 000 T
-----------------	----------

Weight / Linear metre	470 g
-----------------------	-------

LELIEVRE

PARIS



Available colours



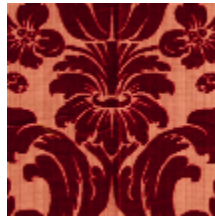
1681-01
MANSART - VERT



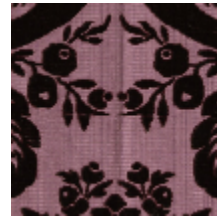
1681-02
MANSART - OR



1681-03
MANSART - BLEU



1681-04
**MANSART -
RUBIS**



1681-05
**MANSART -
AMETHYSTE**



1681-06
**MANSART -
CHATAIN**

LELIEVRE

PARIS

MANSART - CHATAIN

1681-06

