

**DA VINCI - NATTIER**

1692-01



This small checkerboard motif from Leonardo is woven in the same quality. Da Vinci coordinates subtly with each of the colors of the brocatelle.

---

Collection	PATRIMOINE
------------	------------

---

Brand	TASSINARI & CHATEL
-------	--------------------

---

**TECHNICAL DATA**

---

Composition	Silk 57% - Linen 43%
-------------	----------------------

---

Width	130 cm
-------	--------

---

Repeat cut	No
------------	----

---

Drop match	No
------------	----

---

Care	   
------	---

---

Uses	   
------	---

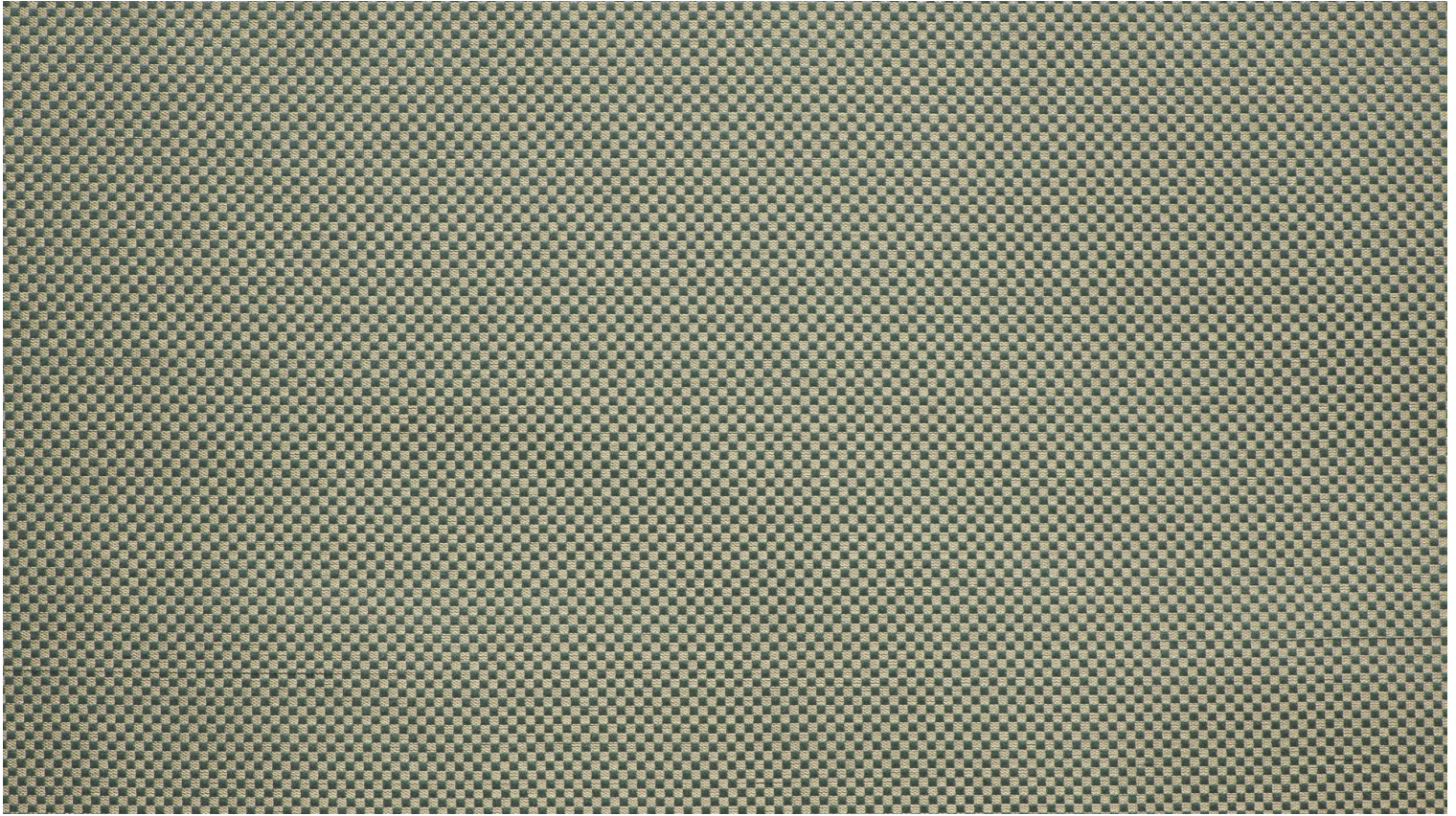
---

Weight / Linear metre	350 g
-----------------------	-------

---

# LELIEVRE

PARIS



## Available colours



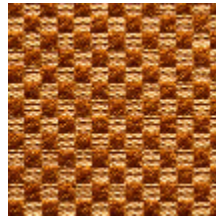
1692-01  
**DA VINCI -  
NATTIER**



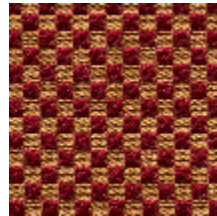
1692-02  
**DA VINCI - EMAIL**



1692-03  
**DA VINCI - OR**



1692-04  
**DA VINCI -  
ECAILLE**



1692-05  
**DA VINCI - RUBIS**



1692-06  
**DA VINCI -  
MYRTHE**

**DA VINCI - NATTIER**

1692-01

