

VITRAIL - LAQUE

1694-04



This elegant design by Maurice Dufren e, a leading figure of the French decorative arts movement in the early 20th century, was originally developed as a fine damask in 1911. It was then woven as a brocatelle for the celebrated autumn show that same year. The style of the motif is typically Art Nouveau, with entwining foliage balanced symmetrically by rhythmic sets of graphic lines characteristic of the modern Art Deco style. Usually these decorative and architectural styles are very distinctive, but here they blend subtly in this textile design. This stems from Dufren e's desire to adapt his creative work to the evolving tastes of the time.

| | |
|------------|------------|
| Collection | PATRIMOINE |
|------------|------------|

| | |
|-------|--------------------|
| Brand | TASSINARI & CHATEL |
|-------|--------------------|

TECHNICAL DATA

| | |
|-------------|----------------------|
| Composition | Linen 53% - Silk 47% |
|-------------|----------------------|

| | |
|-------|--------|
| Width | 130 cm |
|-------|--------|

| | |
|------------|-----|
| Repeat cut | Yes |
|------------|-----|

| | |
|-----------------|--------|
| Vertical repeat | 133 cm |
|-----------------|--------|

| | |
|-------------------|-------|
| Horizontal repeat | 65 cm |
|-------------------|-------|

| | |
|------------|----|
| Drop match | No |
|------------|----|

| | |
|------|---|
| Care |     |
|------|---|

| | |
|------|---|
| Uses |     |
|------|---|

| | |
|-----------------------|-------|
| Weight / Linear metre | 350 g |
|-----------------------|-------|

LELIEVRE

PARIS



Available colours



1694-01
**VITRAIL -
OPALINE**



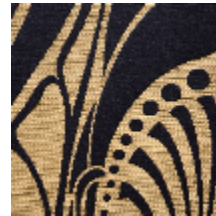
1694-02
**VITRAIL -
CHRYSLER**



1694-03
VITRAIL - DORE



1694-04
VITRAIL - LAQUE



1694-05
**VITRAIL -
COUPOLE**

VITRAIL - LAQUE

1694-04

