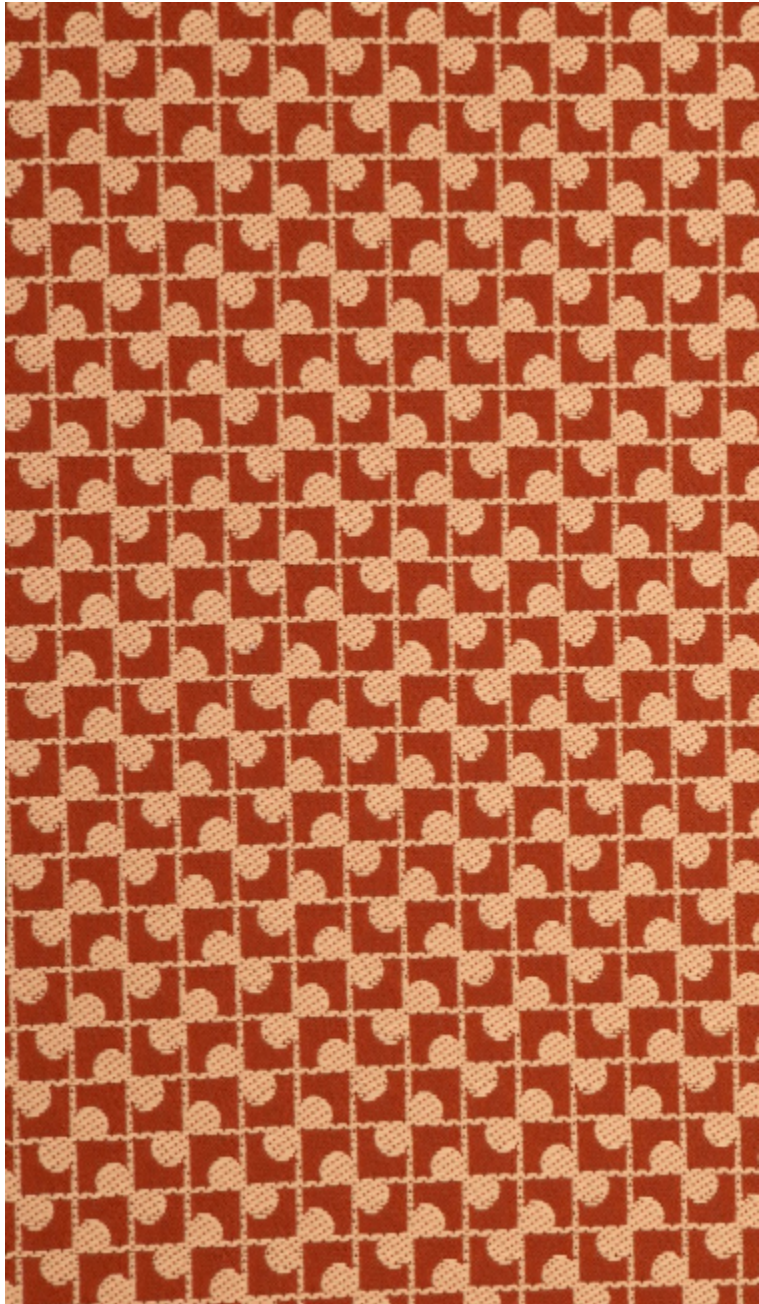


LELIEVRE

PARIS

TOWN M1 - BRIQUE

3229-03



This small two-tone jacquard design is based on ceramic tiles, creating a subtle vibration. Very flexible, it's ideal for curtains.

Collection	METROPOLIS
------------	------------

Brand	LELIEVRE
-------	----------

TECHNICAL DATA

Composition	Polyester FR 100%
-------------	-------------------



Width	142 cm
-------	--------

Repeat cut	No
------------	----

Vertical repeat	3 cm
-----------------	------

Horizontal repeat	3 cm
-------------------	------

Drop match	No
------------	----

Care	   
------	---

Uses	   
------	---

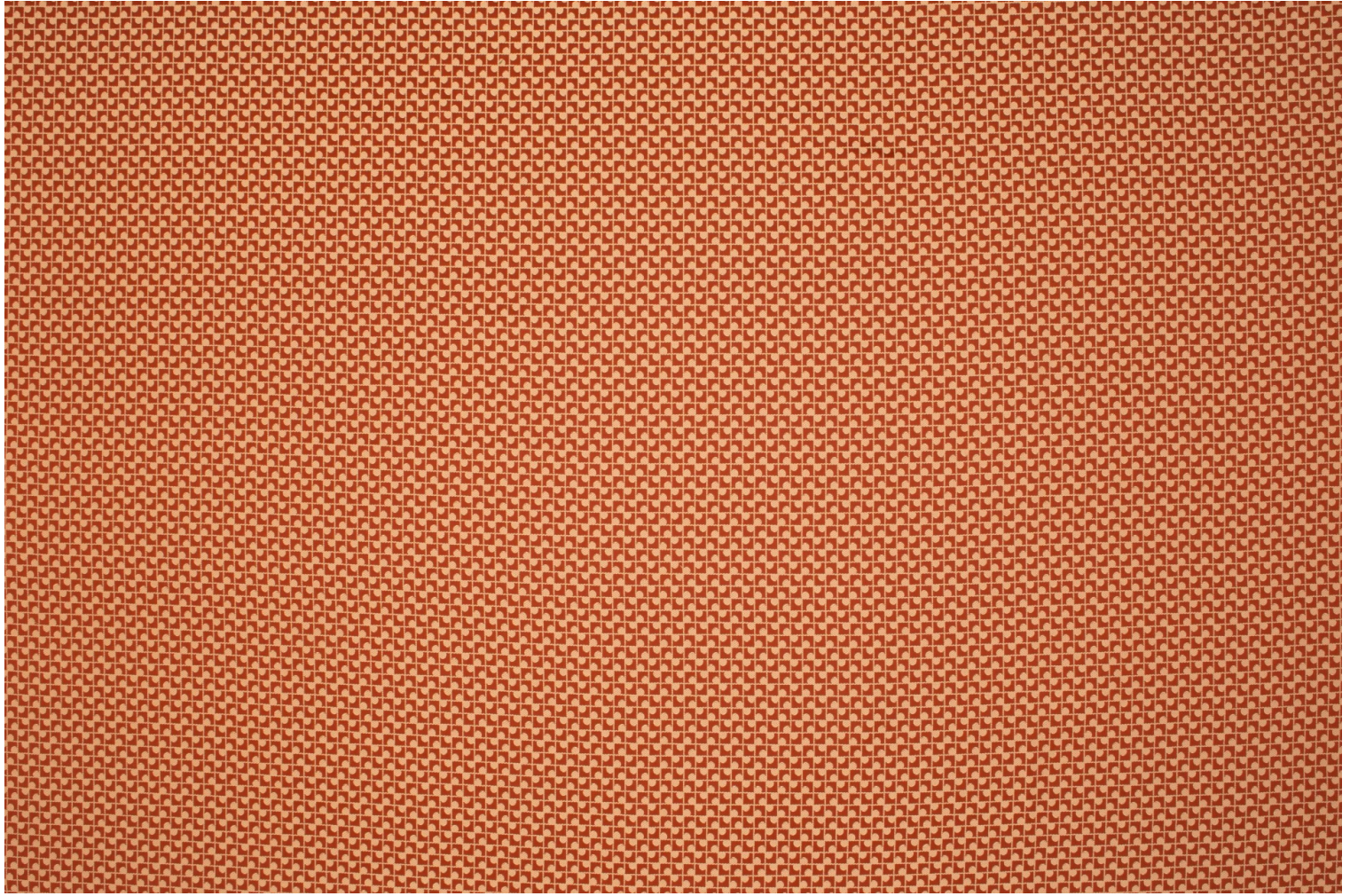
Martindale test	40 000 T
-----------------	----------

Weight / Linear metre	520 g
-----------------------	-------

Fire rating	M1 - EN1021-1&2
-------------	-----------------

LELIEVRE

PARIS



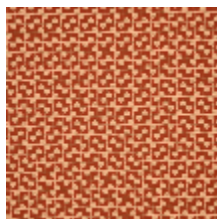
Available colours



3229-01
**TOWN M1 -
NATUREL**



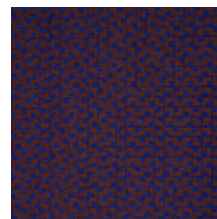
3229-02
**TOWN M1 -
CAMEL**



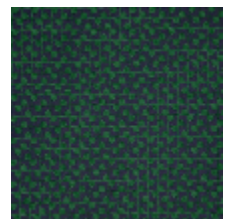
3229-03
**TOWN M1 -
BRIQUE**



3229-04
**TOWN M1 - LIE DE
VIN**



3229-05
TOWN M1 - LAPIS



3229-06
**TOWN M1 -
FORET**

TOWN M1 - BRIQUE

3229-03

