

**SUKKARI - FAUVE**

3242-04

# LELIEVRE

PARIS



This chenille jacquard stands out with its rich texture and exceptionally soft, supple feel. Its small, discreet pattern invites multiple interpretations: some may see a date, others a wild animal's coat or the bark of a tree. Named 'Sukkari' after a variety of dates known for their sweetness and delicacy, this chameleon-like fabric perfectly embodies those qualities. Ideal for both curtains and upholstery.

---

Collection	CONTRÉE SAUVAGE
------------	-----------------

---

Brand	LELIÈVRE PARIS CONTRACT
-------	-------------------------

---

## TECHNICAL DATA

---

Type	Jacquard
------	----------

---

Composition	Polyester FR 100%
-------------	-------------------

---

Width	141 cm
-------	--------

---

Repeat cut	No
------------	----

---

Vertical repeat	3 cm
-----------------	------

---

Horizontal repeat	6 cm
-------------------	------

---

Half drop match	No
-----------------	----

---

Care	  
------	---

---

Uses	   
------	---

---

Martindale test	50 000 T
-----------------	----------

---

Weight / Linear metre	497 g
-----------------------	-------

---

Fire rating	M1 - EN1021-1&2
-------------	-----------------

---

LELIEVRE

PARIS



# LELIEVRE

PARIS

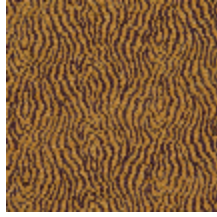
## Available colours



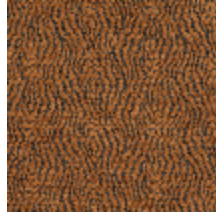
3242-01  
**SUKKARI -  
SAVANE**



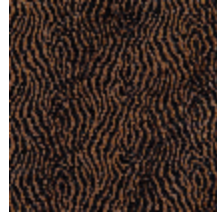
3242-02  
**SUKKARI -  
MORDORE**



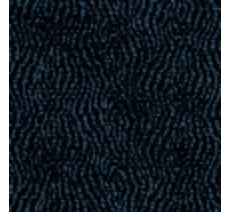
3242-03  
**SUKKARI -  
CURRY**



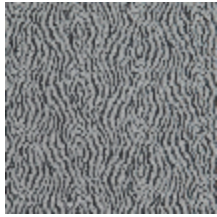
3242-04  
**SUKKARI - FAUVE**



3242-05  
**SUKKARI -  
ACAJOU**



3242-06  
**SUKKARI - NUIT**



3242-07  
**SUKKARI -  
CENDRE**



3242-08  
**SUKKARI -  
NATUREL**

**SUKKARI - FAUVE**

3242-04

