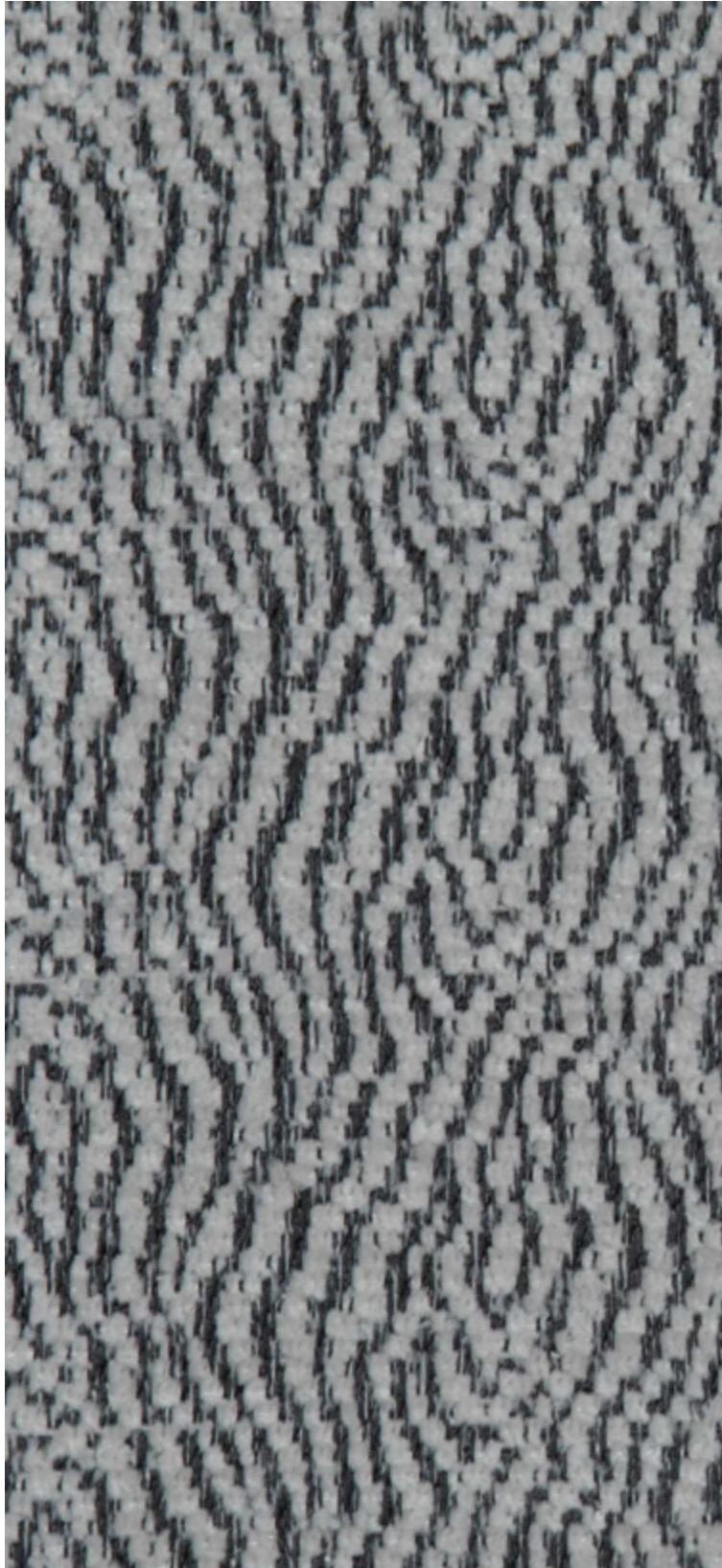


SUKKARI - CENDRE

3242-07

LELIEVRE

PARIS



This chenille jacquard stands out with its rich texture and exceptionally soft, supple feel. Its small, discreet pattern invites multiple interpretations: some may see a date, others a wild animal's coat or the bark of a tree. Named 'Sukkari' after a variety of dates known for their sweetness and delicacy, this chameleon-like fabric perfectly embodies those qualities. Ideal for both curtains and upholstery.

Collection	CONTRÉE SAUVAGE
------------	-----------------

Brand	LELIÈVRE PARIS CONTRACT
-------	-------------------------

TECHNICAL DATA

Type	Jacquard
------	----------

Composition	Polyester FR 100%
-------------	-------------------

Width	141 cm
-------	--------

Repeat cut	No
------------	----

Vertical repeat	3 cm
-----------------	------

Horizontal repeat	6 cm
-------------------	------

Half drop match	No
-----------------	----

Care	  
------	---

Uses	   
------	---

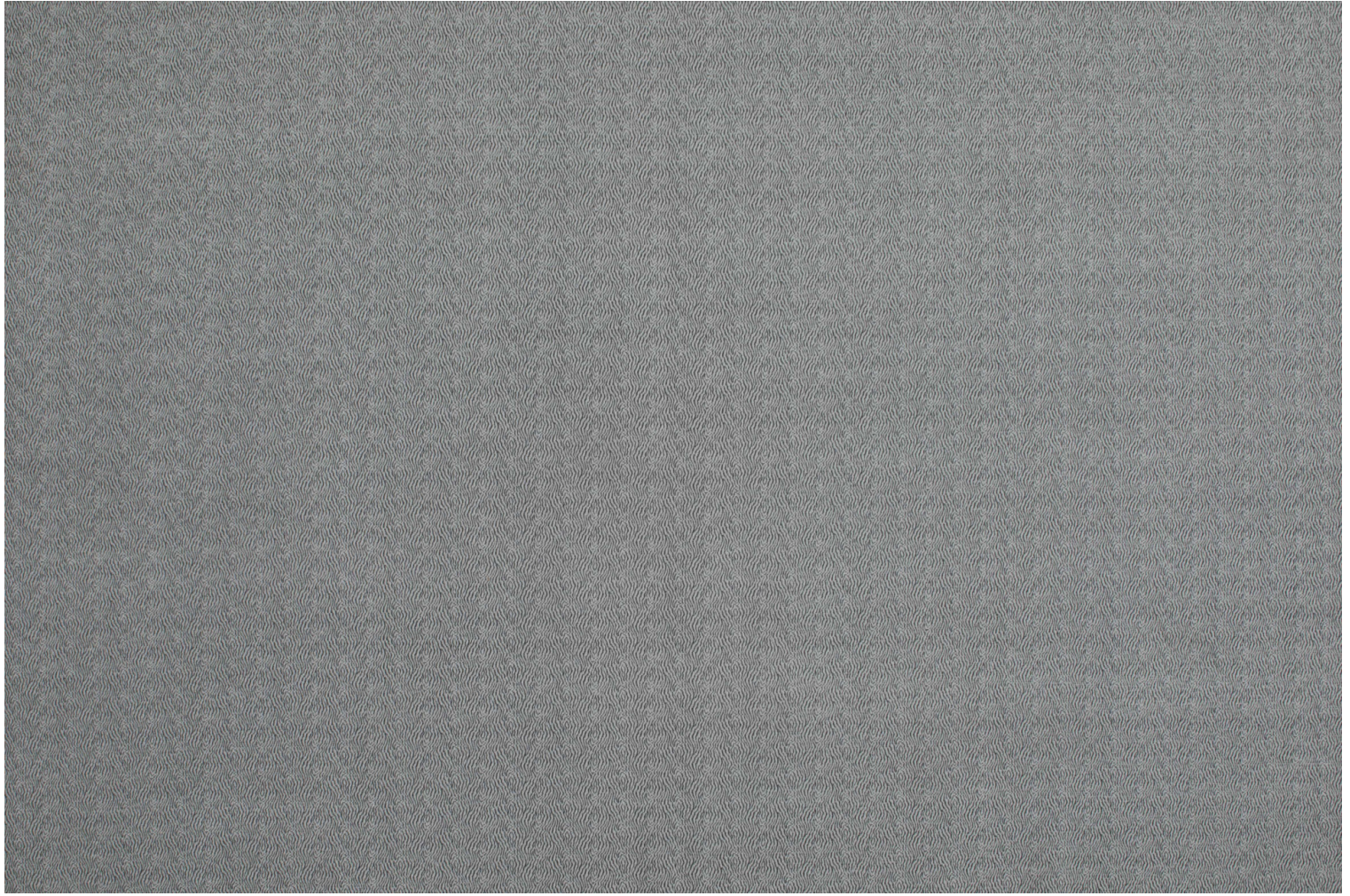
Martindale test	50 000 T
-----------------	----------

Weight / Linear metre	497 g
-----------------------	-------

Fire rating	M1 - EN1021-1&2
-------------	-----------------

LELIEVRE

PARIS



LELIEVRE

PARIS

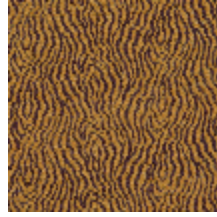
Available colours



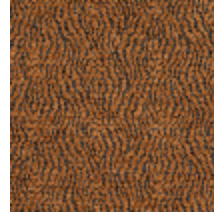
3242-01
**SUKKARI -
SAVANE**



3242-02
**SUKKARI -
MORDORE**



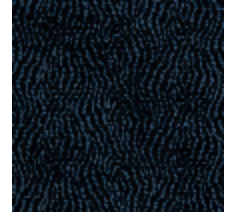
3242-03
**SUKKARI -
CURRY**



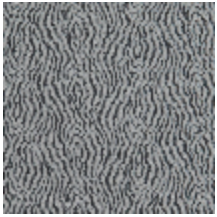
3242-04
SUKKARI - FAUVE



3242-05
**SUKKARI -
ACAJOU**



3242-06
SUKKARI - NUIT



3242-07
**SUKKARI -
CENDRE**



3242-08
**SUKKARI -
NATUREL**

SUKKARI - CENDRE

3242-07

