

LELIEVRE

PARIS

NOMADE - BEIGE

3264-02



NOMADE is probably the design where Tristan Auer's architectural inspiration for NAJD is most palpable. The design consists of small squares arranged into trompe-l'oeil windows in a nod to the mashrabiyas typical of the area. Though the fabric looks embroidered with its raised effect, it is actually a true Jacquard, available in four colourways that echo the palette for the rest of the collection.

Collection	NAJD
------------	------

Brand	LELIEVRE
-------	----------

TECHNICAL DATA

Composition	Cotton 40% - Polyester 25% - Viscose 22% - Linen 13%
-------------	---

Width	140 cm
-------	--------

Repeat cut	No
------------	----

Vertical repeat	4 cm
-----------------	------

Horizontal repeat	4 cm
-------------------	------

Drop match	No
------------	----

Care	   
------	---

Uses	   
------	---

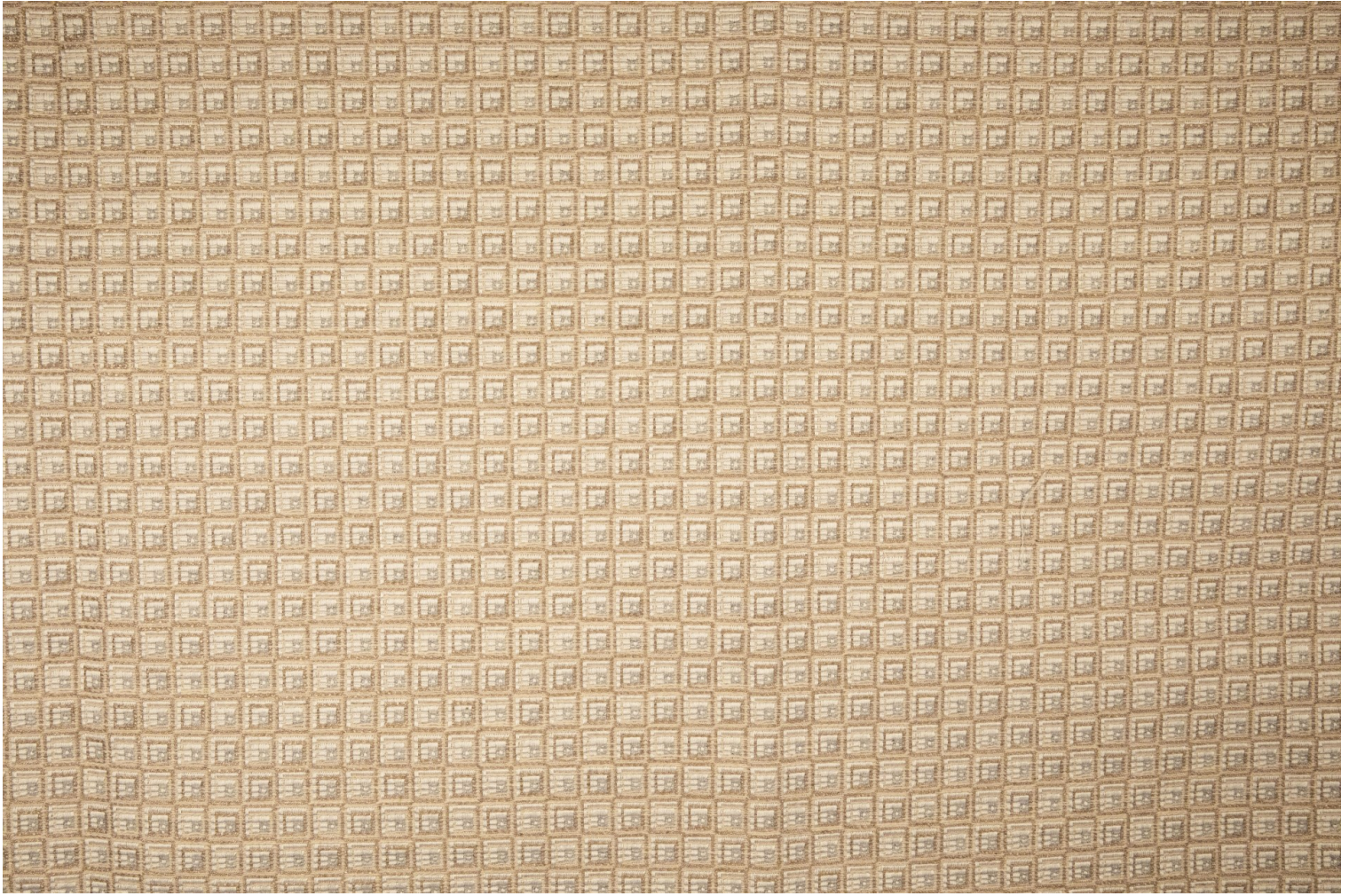
Martindale test	35 000 T
-----------------	----------

Weight / Linear metre	860 g
-----------------------	-------

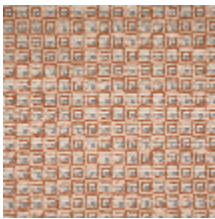
Fire rating	EN1021-1&2
-------------	------------

LELIEVRE

PARIS



Available colours



3264-01
**NOMADE -
TERACOTTA**



3264-02
NOMADE - BEIGE



3264-03
**NOMADE - GRIS
BLEU**



3264-04
**NOMADE -
MARINE**

NOMADE - BEIGE

3264-02

