

KHAIMA M1 - TERRACOTTA

3265-04



KHAÏMA (the Arabic word for the 'tent' traditionally used by nomads travelling in the desert) is the only high-performance material in the collection - a natural and soft touch polyester fabric. From beige to navy to terracotta, KHAÏMA is available in six colourways that share the same earth-toned base woven with pyramid-shaped motifs. | Design: Tristan Auer

Collection	NAJD
------------	------

Brand	LELIEVRE
-------	----------

TECHNICAL DATA

Composition	Polyester FR 100%
-------------	-------------------



Width	141 cm
-------	--------


Repeat cut	No
------------	----

Vertical repeat	17 cm
-----------------	-------

Horizontal repeat	35 cm
-------------------	-------

Drop match	No
------------	----

Care	   
------	---

Uses	  
------	---

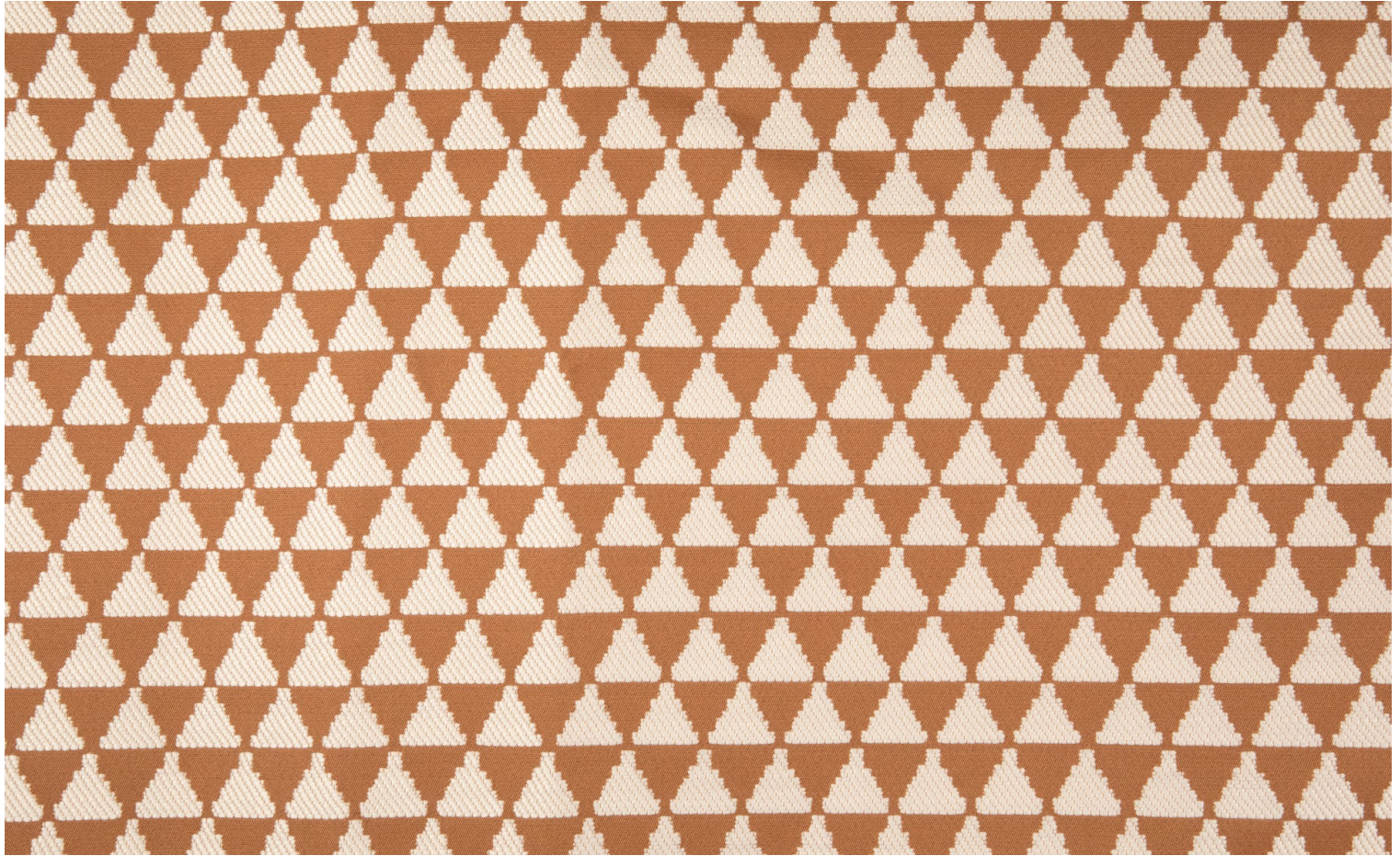
Martindale test	30 000 T
-----------------	----------

Weight / Linear metre	805 g
-----------------------	-------

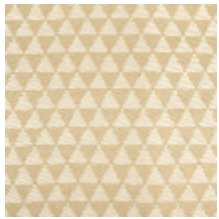
Fire rating	M1
-------------	----

LELIEVRE

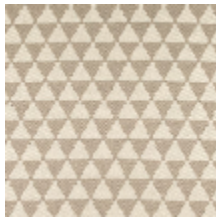
PARIS



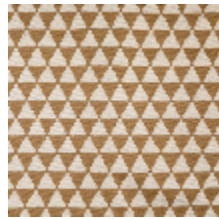
Available colours



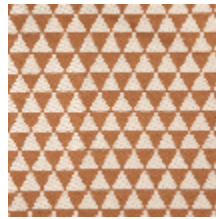
3265-01
**KHAIMA M1 -
BEIGE**



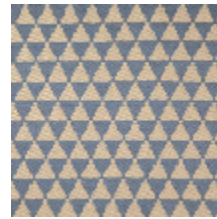
3265-02
**KHAIMA M1 -
FICELLE**



3265-03
**KHAIMA M1 -
CAMEL**



3265-04
**KHAIMA M1 -
TERRACOTTA**



3265-05
**KHAIMA M1 -
GRIS BLEU**



3265-06
**KHAIMA M1 -
MARINE**

KHAIMA MI - TERRACOTTA

3265-04

