

LELIEVRE

PARIS

KHAIMA M1 - GRIS BLEU

3265-05



KHAIMA (the Arabic word for the 'tent' traditionally used by nomads travelling in the desert) is the only high-performance material in the collection - a natural and soft touch polyester fabric. From beige to navy to terracotta, KHAIMA is available in six colourways that share the same earth-toned base woven with pyramid-shaped motifs. | Design: Tristan Auer

Collection **NAJD**

Brand **LELIEVRE**

TECHNICAL DATA

Composition **Polyester FR 100%**

Width **141 cm**

Repeat cut **No**

Vertical repeat **17 cm**

Horizontal repeat **35 cm**

Drop match **No**

Care    

Uses   

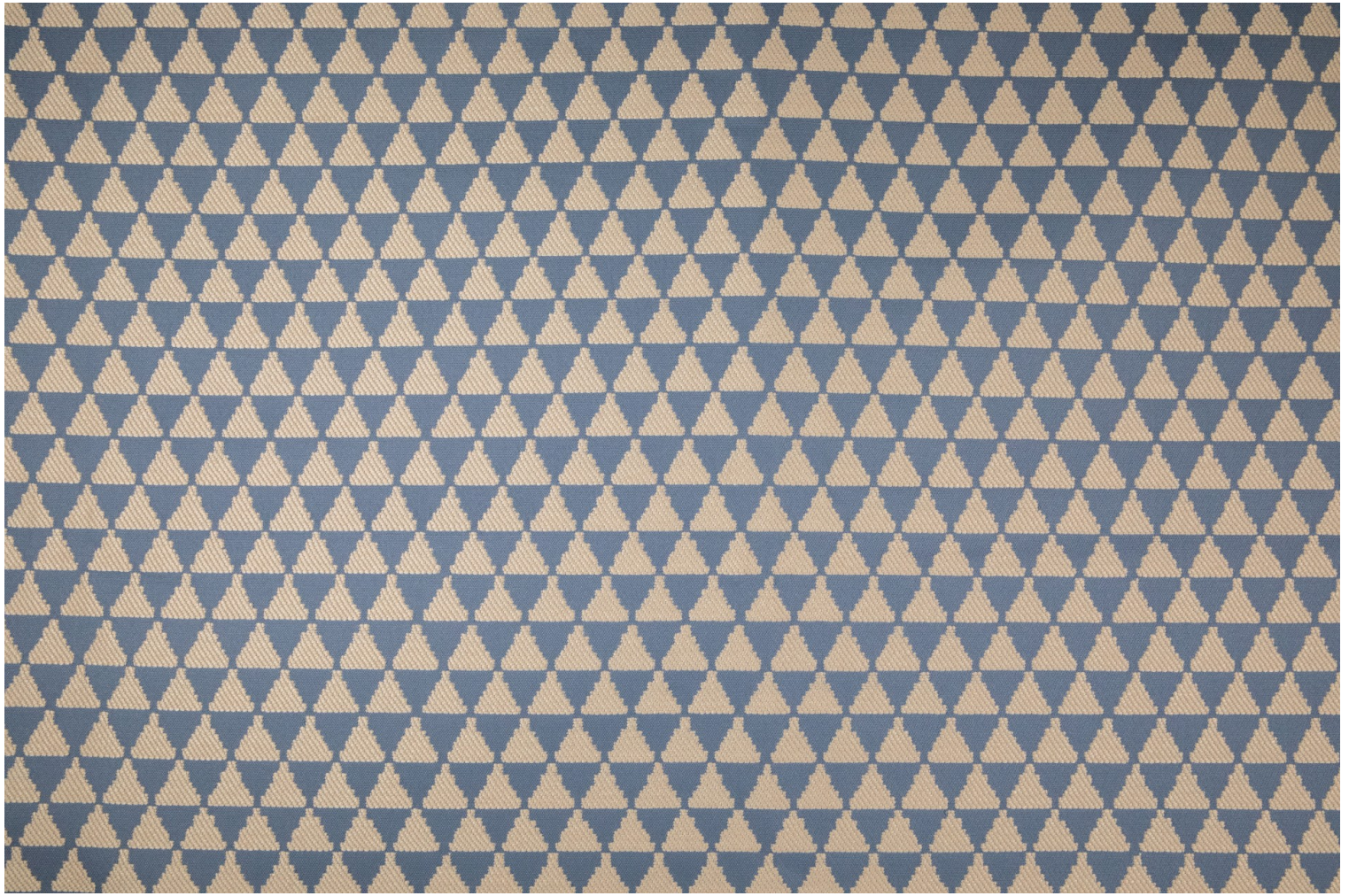
Martindale test **30 000 T**

Weight / Linear metre **805 g**

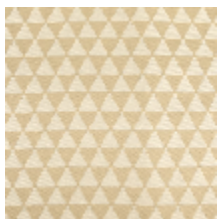
Fire rating **M1**

LELIEVRE

PARIS



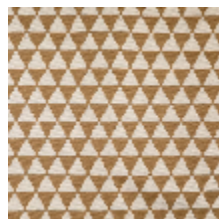
Available colours



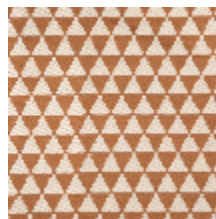
3265-01
**KHAIMA M1 -
BEIGE**



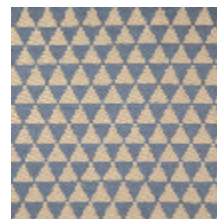
3265-02
**KHAIMA M1 -
FICELLE**



3265-03
**KHAIMA M1 -
CAMEL**



3265-04
**KHAIMA M1 -
TERRACOTTA**



3265-05
**KHAIMA M1 -
GRIS BLEU**



3265-06
**KHAIMA M1 -
MARINE**

LELIEVRE

PARIS

KHAIMA M1 - GRIS BLEU

3265-05

