

# LELIEVRE

PARIS

## KHAIMA M1 - MARINE

3265-06



KHAIMA (the Arabic word for the 'tent' traditionally used by nomads travelling in the desert) is the only high-performance material in the collection - a natural and soft touch polyester fabric. From beige to navy to terracotta, KHAIMA is available in six colourways that share the same earth-toned base woven with pyramid-shaped motifs. | Design: Tristan Auer

---

Collection	NAJD
------------	------

---

Brand	LELIEVRE PARIS
-------	----------------

---

### TECHNICAL DATA

---

Composition	Polyester FR 100%
-------------	-------------------

---

Width	141 cm
-------	--------

---

Repeat cut	No
------------	----

---

Vertical repeat	17 cm
-----------------	-------



---

Horizontal repeat	35 cm
-------------------	-------


---

Drop match	No
------------	----

---

Care	   
------	---

---

Uses	  
------	---

---

Martindale test	30 000 T
-----------------	----------

---

Weight / Linear metre	805 g
-----------------------	-------

---

Fire rating	M1
-------------	----

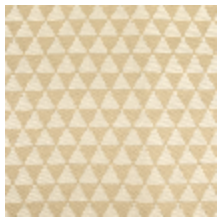
---

# LELIEVRE

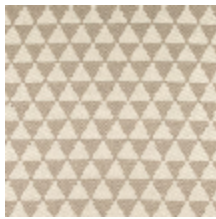
PARIS



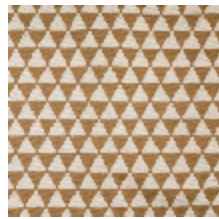
## Available colours



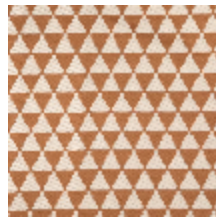
3265-01  
**KHAIMA M1 -  
BEIGE**



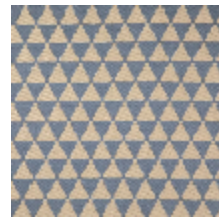
3265-02  
**KHAIMA M1 -  
FICELLE**



3265-03  
**KHAIMA M1 -  
CAMEL**



3265-04  
**KHAIMA M1 -  
TERRACOTTA**



3265-05  
**KHAIMA M1 -  
GRIS BLEU**



3265-06  
**KHAIMA M1 -  
MARINE**

**KHAIMA M1 - MARINE**

3265-06

