

# LELIEVRE

PARIS

## KOMODO - LAQUE \*

3433-05



The year of the Dragon. A magnificent technical interpretation showing the hand drawing of Jean Paul Gaultier on a high definition damask. This signed monochrome tattoo motif is available in six characteristic colours suitable for upholstery.

---

Collection	CA C'EST PARIS!
------------	-----------------

---

Brand	JEAN PAUL GAULTIER
-------	--------------------

---

### TECHNICAL DATA

---

Composition	Cotton 78% - Polyamide 22%
-------------	----------------------------

---

Width	142 cm
-------	--------

---

Repeat cut	No
------------	----

---

Vertical repeat	92 cm
-----------------	-------

---

Drop match	No
------------	----

---

Care	   
------	---

---

Uses	   
------	---

---

Martindale test	40 000 T
-----------------	----------

---

Weight / Linear metre	497 g
-----------------------	-------

---

# LELIEVRE

PARIS

## Available colours



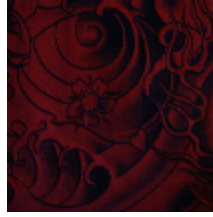
3433-01  
**KOMODO -  
GRAPHITE**



3433-02  
**KOMODO - BEIGE**



3433-03  
**KOMODO - NUIT \***



3433-04  
**KOMODO -  
NECTAR**



3433-05  
**KOMODO -  
LAQUE \***



3433-06  
**KOMODO - GOLD**

# LELIEVRE

PARIS

## KOMODO - LAQUE \*

3433-05

