

# LELIEVRE

PARIS

## KOMODO - GOLD

3433-06



The year of the Dragon. A magnificent technical interpretation showing the hand drawing of Jean Paul Gaultier on a high definition damask. This signed monochrome tattoo motif is available in six characteristic colours suitable for upholstery.

Collection CA C'EST PARIS!

Brand JEAN PAUL GAULTIER

### TECHNICAL DATA

Composition Cotton 78% - Polyamide 22%

Width 142 cm

Repeat cut No

Vertical repeat 92 cm

Drop match No

Care 

Uses 

Martindale test 40 000 T

Weight / Linear metre 497 g

# LELIEVRE

PARIS

## Available colours



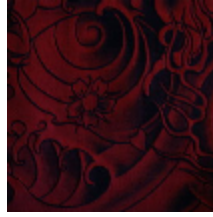
3433-01  
**KOMODO -  
GRAPHITE**



3433-02  
**KOMODO - BEIGE**



3433-03  
**KOMODO - NUIT \***



3433-04  
**KOMODO -  
NECTAR**



3433-05  
**KOMODO -  
LAQUE \***



3433-06  
**KOMODO - GOLD**

# LELIEVRE

PARIS

## KOMODO - GOLD

3433-06

