

# LELIEVRE

PARIS

## CABARET - PORCELAINE \*

3436-04



The couture touch. An indispensable semi plain with a fashion twist. A feminine wink with a fishnet design reinterpreted in jacquard to kickstart the brand. Reversible, 10 shades form 20 colours unite all the fabrics in this first collection.

---

Collection	CA C'EST PARIS !
------------	------------------

---

Brand	JEAN PAUL GAULTIER
-------	--------------------

---

### TECHNICAL DATA

---

Composition	Cotton 100%
-------------	-------------

---

Width	138 cm
-------	--------


---

Repeat cut	No
------------	----

---

Drop match	No
------------	----

---

Care	   
------	---

---

Uses	   
------	---

---

Martindale test	21 000 T
-----------------	----------

---

Weight / Linear metre	365 g
-----------------------	-------

---

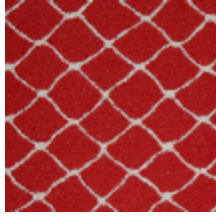
# LELIEVRE

PARIS

## Available colours



3436-01  
**CABARET -  
GRAPHITE \***



3436-02  
**CABARET -  
ROUGE \***



3436-03  
**CABARET -  
BORDEAUX \***



3436-04  
**CABARET -  
PORCELAINE \***



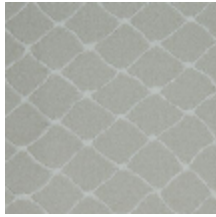
3436-06  
**CABARET -  
POLLEN \***



3436-07  
**CABARET -  
LAQUE \***



3436-08  
**CABARET -  
NECTAR \***



3436-09  
**CABARET - BEIGE  
\***



3436-10  
**CABARET -  
CHAIR \***

**CABARET - PORCELAINE \***

3436-04

