

LELIEVRE

PARIS

OBI - BRIQUE *

3467-04



On a small piece of jacquard, a spring flower, discreet and miniaturised, plays the false plain with tenderness, as indispensable as the Obi, the belt centrepiece of the traditional kimono.

Collection	VOYAGES VOYAGES
------------	-----------------

Brand	JEAN PAUL GAULTIER
-------	--------------------

TECHNICAL DATA

Composition	Cotton 58% - Viscose 42%
-------------	--------------------------

Width	135 cm
-------	--------

Repeat cut	No
------------	----

Vertical repeat	8 cm
-----------------	------

Horizontal repeat	8 cm
-------------------	------

Drop match	No
------------	----

Care	   
------	---

Uses	   
------	---

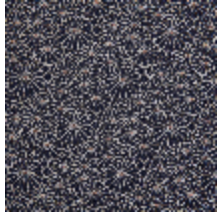
Martindale test	25 000 T
-----------------	----------

Weight / Linear metre	535 g
-----------------------	-------

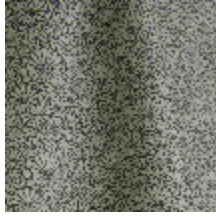
LELIEVRE

PARIS

Available colours



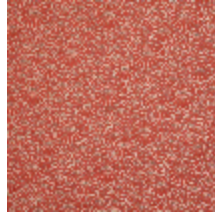
3467-01
OBI - NOIR



3467-02
OBI - NATUREL



3467-03
OBI - DORE



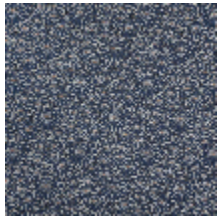
3467-04
OBI - BRIQUE *



3467-05
OBI - AMANDE



3467-07
OBI - CIEL



3467-08
OBI - MARINE

OBI - BRIQUE *

3467-04

