

# LELIEVRE

PARIS

## OBI - AMANDE

3467-05



On a small piece of jacquard, a spring flower, discreet and miniaturised, plays the false plain with tenderness, as indispensable as the Obi, the belt centrepiece of the traditional kimono.

---

Collection	VOYAGES VOYAGES
------------	-----------------

---

Brand	JEAN PAUL GAULTIER
-------	--------------------

---

### TECHNICAL DATA

---

Composition	Cotton 58% - Viscose 42%
-------------	--------------------------

---

Width	135 cm
-------	--------

---

Repeat cut	No
------------	----

---

Vertical repeat	8 cm
-----------------	------

---

Horizontal repeat	8 cm
-------------------	------

---

Drop match	No
------------	----

---

Care	   
------	---

---

Uses	   
------	---

---

Martindale test	25 000 T
-----------------	----------

---

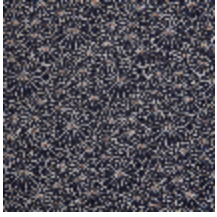
Weight / Linear metre	535 g
-----------------------	-------

---

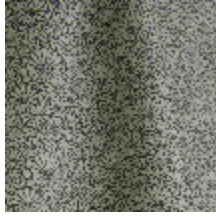
# LELIEVRE

PARIS

## Available colours



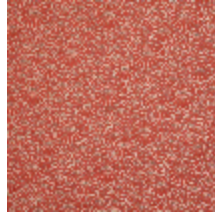
3467-01  
**OBI - NOIR**



3467-02  
**OBI - NATUREL**



3467-03  
**OBI - DORE**



3467-04  
**OBI - BRIQUE \***



3467-05  
**OBI - AMANDE**



3467-07  
**OBI - CIEL**



3467-08  
**OBI - MARINE**

**OBI - AMANDE**

3467-05

