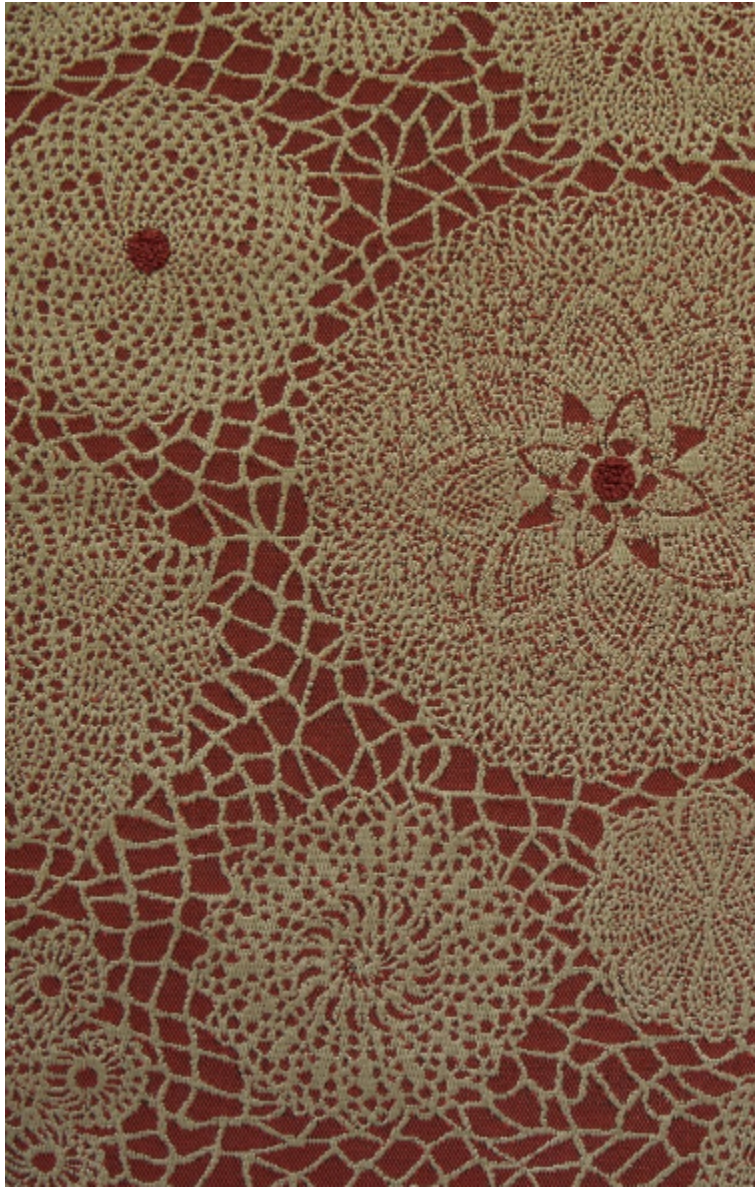


**MACRAME - BRIQUE \***

3491-03



A jacquard weave with a classical, soothing design in relief.

Collection **POP ROCK**

Brand **JEAN PAUL GAULTIER**

## TECHNICAL DATA

Composition **Viscose 70% - Polyester 30%**

Width **140 cm**

Repeat cut **No**

Vertical repeat **47 cm**

Horizontal repeat **35 cm**

Drop match **No**

Care    

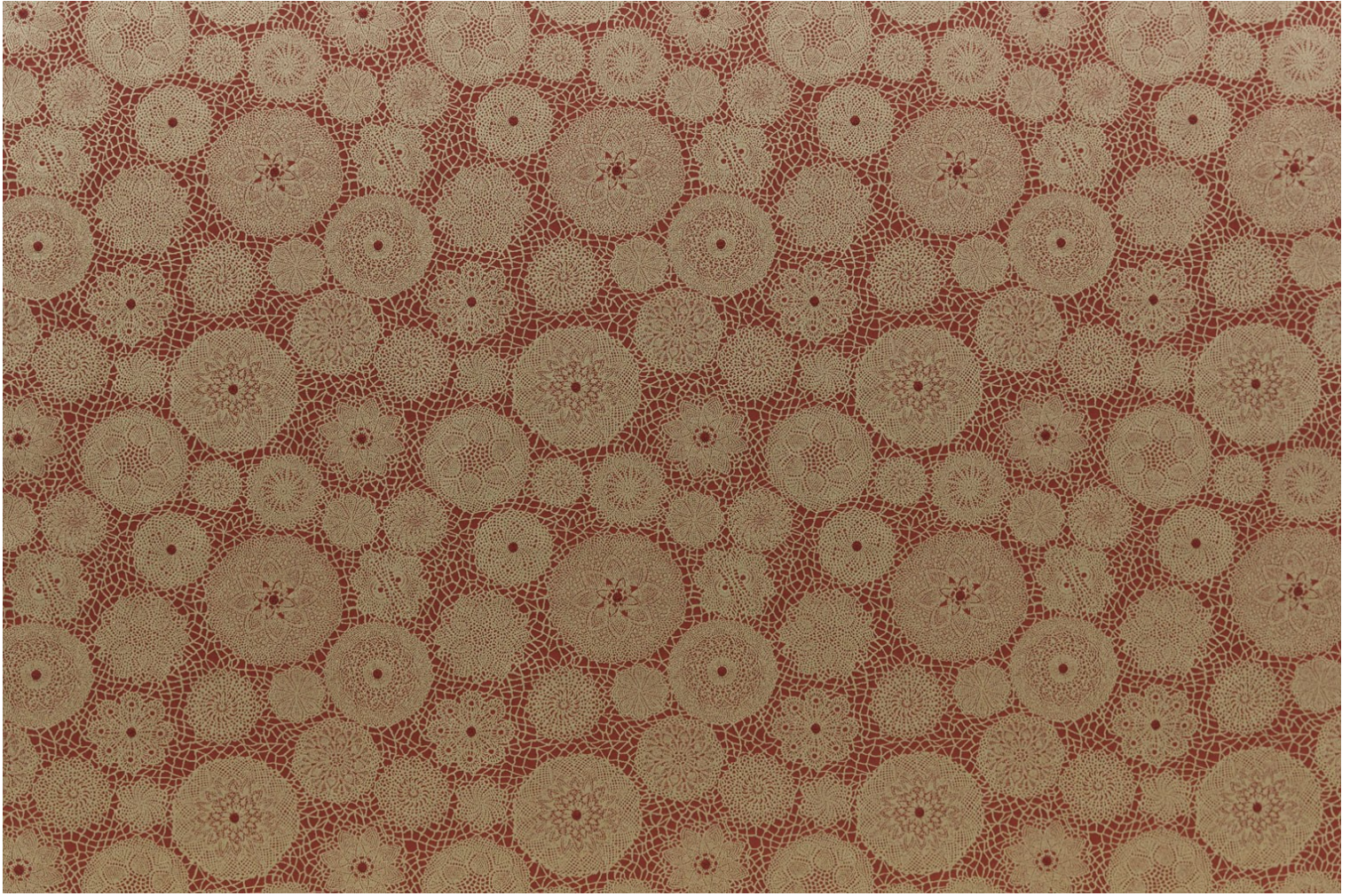
Uses   

Martindale test **25 000 T**

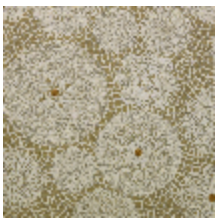
Weight / Linear metre **742 g**

# LELIEVRE

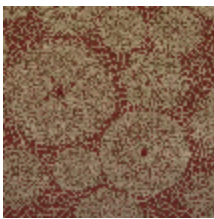
PARIS



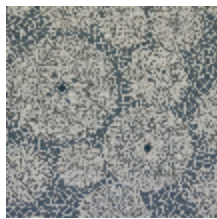
## Available colours



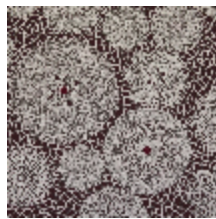
3491-02  
**MACRAME -  
POLLEN \***



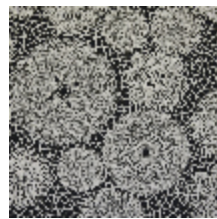
3491-03  
**MACRAME -  
BRIQUE \***



3491-04  
**MACRAME - BLEU  
\***



3491-05  
**MACRAME -  
BORDEAUX \***



3491-06  
**MACRAME - NOIR  
\***

## MACRAME - BRIQUE \*

3491-03

