

LELIEVRE

PARIS

SILHOUETTES - BORDEAUX

3492-04



An extremely supple and robust jacquard weave with a sophisticated drape.

Collection	POP ROCK
------------	----------

Brand	JEAN PAUL GAULTIER
-------	--------------------

TECHNICAL DATA

Composition	Cotton 90% - Polyamide 10%
-------------	----------------------------

Width	140 cm
-------	--------


Repeat cut	No
------------	----

Vertical repeat	29 cm
-----------------	-------

Horizontal repeat	14 cm
-------------------	-------

Drop match	No
------------	----

Care	   
------	---

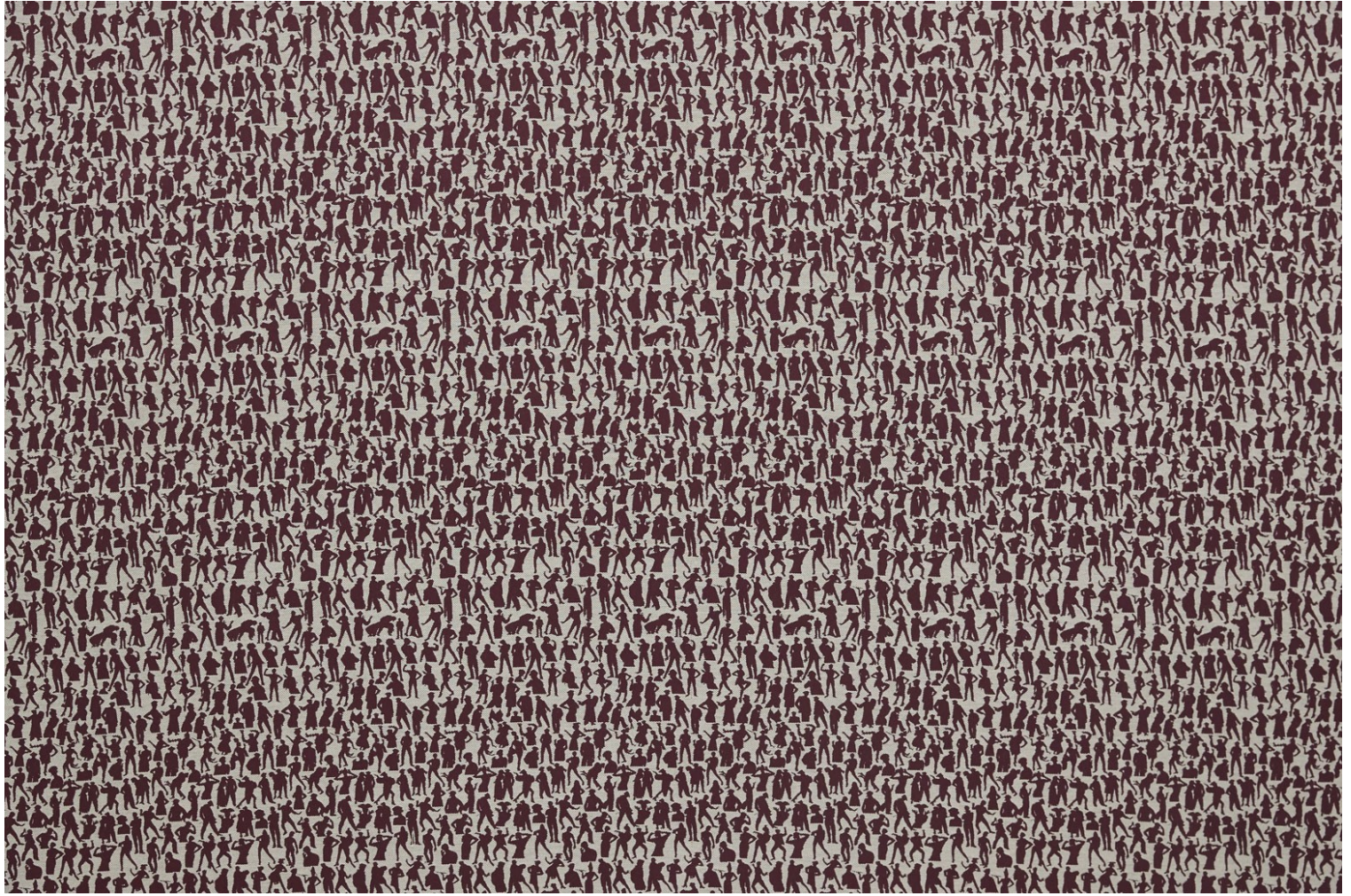
Uses	   
------	---

Martindale test	35 000 T
-----------------	----------

Weight / Linear metre	510 g
-----------------------	-------

LELIEVRE

PARIS



Available colours



3492-01
**SILHOUETTES -
NATUREL**



3492-02
**SILHOUETTES -
JAUNE**



3492-03
**SILHOUETTES -
TERRACOTTA**



3492-04
**SILHOUETTES -
BORDEAUX**



3492-05
**SILHOUETTES -
FUCHSIA**



3492-06
**SILHOUETTES -
NOIR**

SILHOUETTES - BORDEAUX

3492-04

