

# LELIEVRE

PARIS

## OPTIC - JAUNE \*

3494-02



The corresponding jacquard is more discrete multi-use classical semi-plain.

---

Collection	POP ROCK
------------	----------

---

Brand	JEAN PAUL GAULTIER
-------	--------------------

---

### TECHNICAL DATA

---

Composition	Viscose 74% - Cotton 23% - Polyamide 3%
-------------	---

---

Width	140 cm
-------	--------

---

Repeat cut	No
------------	----

---

Vertical repeat	6 cm
-----------------	------


---

Horizontal repeat	17 cm
-------------------	-------

---

Drop match	No
------------	----

---

Care	   
------	---

---

Uses	   
------	---

---

Martindale test	25 000 T
-----------------	----------

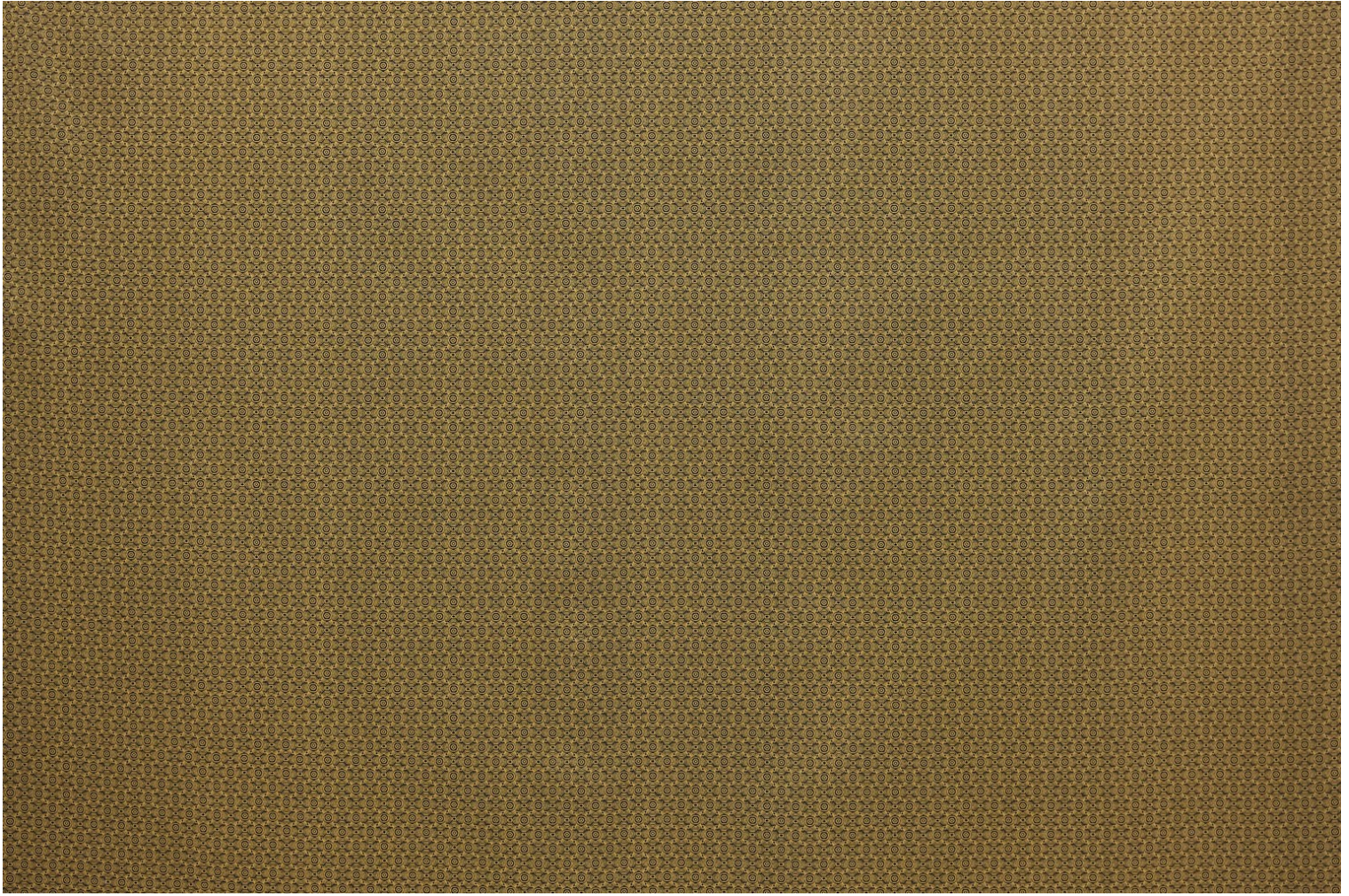
---

Weight / Linear metre	461 g
-----------------------	-------

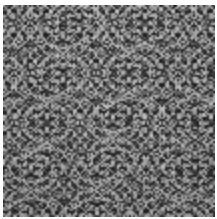
---

# LELIEVRE

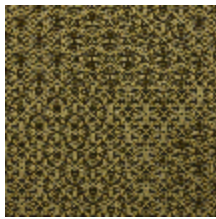
PARIS



## Available colours



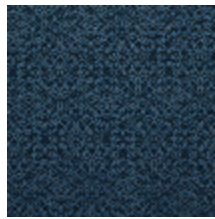
3494-01  
**OPTIC -  
GRAPHITE \***



3494-02  
**OPTIC - JAUNE \***



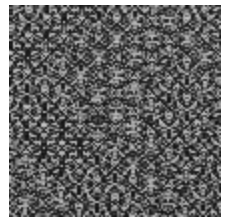
3494-03  
**OPTIC - ROUGE \***



3494-04  
**OPTIC -  
TURQUOISE \***



3494-05  
**OPTIC - FUCHSIA  
\***



3494-06  
**OPTIC - NOIR \***

# LELIEVRE

PARIS

**OPTIC - JAUNE \***

3494-02



[lelievrepairs.com](http://lelievrepairs.com)  
[contact@lelievrepairs.com](mailto:contact@lelievrepairs.com)