

## PATCHWORK - BURGUNDY

3614-04



With its quilted Cordoba leather effect, Patchwork is a great relief work with a very supple and a satiny feel. Also used in many of Jean Paul Gaultier's Haute Couture creations, this pattern is now making its way into our interiors.

Collection	LA CROISIERE S'AMUSE
------------	----------------------

Brand	JEAN PAUL GAULTIER
-------	--------------------

## TECHNICAL DATA

Composition	65% Cotton - 30% Polyamide - 5% Polyester
-------------	---

Width	145 cm
-------	--------

Repeat cut	No
------------	----

Vertical repeat	81 cm
-----------------	-------

Drop match	No
------------	----

Care	   
------	---

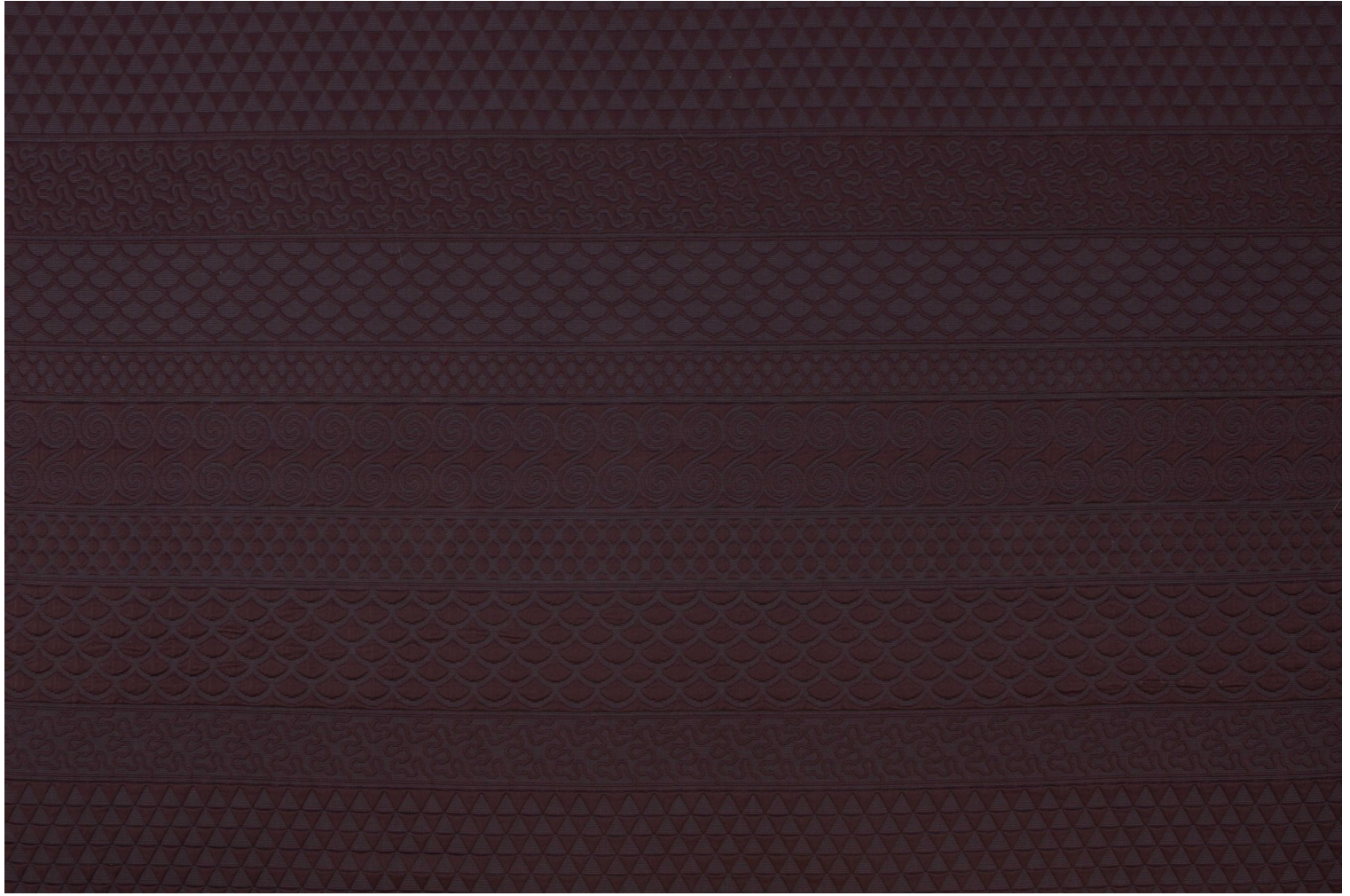
Uses	   
------	---

Martindale test	30 000 T
-----------------	----------

Weight / Linear metre	570 g
-----------------------	-------

# LELIEVRE

PARIS



[lelievreparis.com](http://lelievreparis.com)  
[contact@lelievreparis.com](mailto:contact@lelievreparis.com)

# LELIEVRE

PARIS

## Available colours



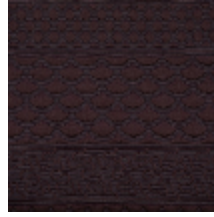
3614-01  
**PATCHWORK -  
FUSAIN**



3614-02  
**PATCHWORK -  
TAUPE**



3614-03  
**PATCHWORK -  
CAMEL**



3614-04  
**PATCHWORK -  
BURGUNDY**



3614-05  
**PATCHWORK -  
LILAS**



3614-06  
**PATCHWORK -  
ACQUA**



3614-07  
**PATCHWORK -  
PAON**



3614-08  
**PATCHWORK -  
LIMONCELLO**



**PATCHWORK - BURGUNDY**

3614-04

