

LELIEVRE

PARIS

CROISIERE - BENGALE

3615-03



Jean Paul Gaultier's classic sailor stripe has been decorated with flowers in a summery jacquard. The ikat-effect flowers are reminiscent of the designer's DNA.

Collection	LA CROISIERE S'AMUSE
------------	----------------------

Brand	JEAN PAUL GAULTIER
-------	--------------------

TECHNICAL DATA

Composition	72% Viscose - 28% Cotton
-------------	--------------------------


Width	145 cm
-------	--------


Repeat cut	No
------------	----

Vertical repeat	63 cm
-----------------	-------

Horizontal repeat	72 cm
-------------------	-------

Drop match	No
------------	----

Care	   
------	---

Uses	   
------	---

Martindale test	20 000 T
-----------------	----------

Weight / Linear metre	740 g
-----------------------	-------

LELIEVRE

PARIS



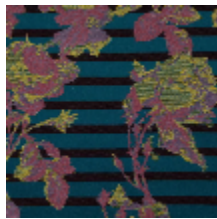
Available colours



3615-01
**CROISIÈRE -
NATUREL**



3615-02
**CROISIÈRE -
BERGAMOTE**



3615-03
**CROISIÈRE -
BENGALE**



3615-04
**CROISIÈRE -
MARINE**

LELIEVRE

PARIS

CROISIERE - BENGALE

3615-03

