

# LELIEVRE

PARIS

## SANTORIN - CAMEL

3617-03



A play of fading nets for this fabric woven in our manufacture (EPV - Living Heritage Company). This pattern, with its torn fishnet effect, suggests different interpretations. Whether animal, reptile or fishnet, the textile is brought to life through the eyes of the observer. Available in six natural colours, the range is fresh and lively, with a summery touch.

---

Collection LA CROISIERE S'AMUSE

---

Brand JEAN PAUL GAULTIER

---

### TECHNICAL DATA

---

Composition Cotton 61% - Polyamide 39%

---

Width 141 cm

---

Repeat cut No

---

Vertical repeat 31 cm

---

Horizontal repeat 36 cm

---

Drop match No

---

Care 

---

Uses 

---

Martindale test 50 000 T

---

Weight / Linear metre 430 g

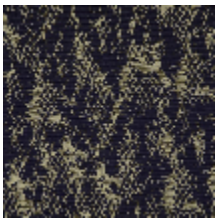
---

# LELIEVRE

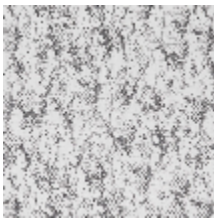
PARIS



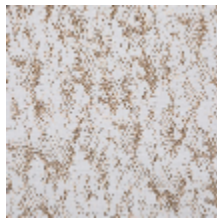
## Available colours



3617-01  
**SANTORIN -  
RAISIN**



3617-02  
**SANTORIN - NOIR  
ECRU**



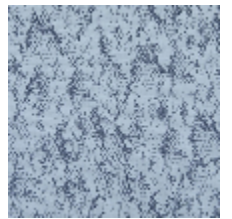
3617-03  
**SANTORIN -  
CAMEL**



3617-04  
**SANTORIN -  
LIMONCELLO**



3617-05  
**SANTORIN -  
CELADON**



3617-06  
**SANTORIN -  
ACQUA**

**SANTORIN - CAMEL**

3617-03

