

# LELIEVRE

PARIS

## FAUVE - ECRU









4031-02



FAUVE is an animal skin design, a jacquard woven in the Lelièvre mill near Lyon. It features a beautiful play on texture: a smooth and vibrant effect created by the strie wrap, and a textured effect from the viscose linen yarn. FAUVE blends perfectly with the other patterns of the collection bringing a very modern look.

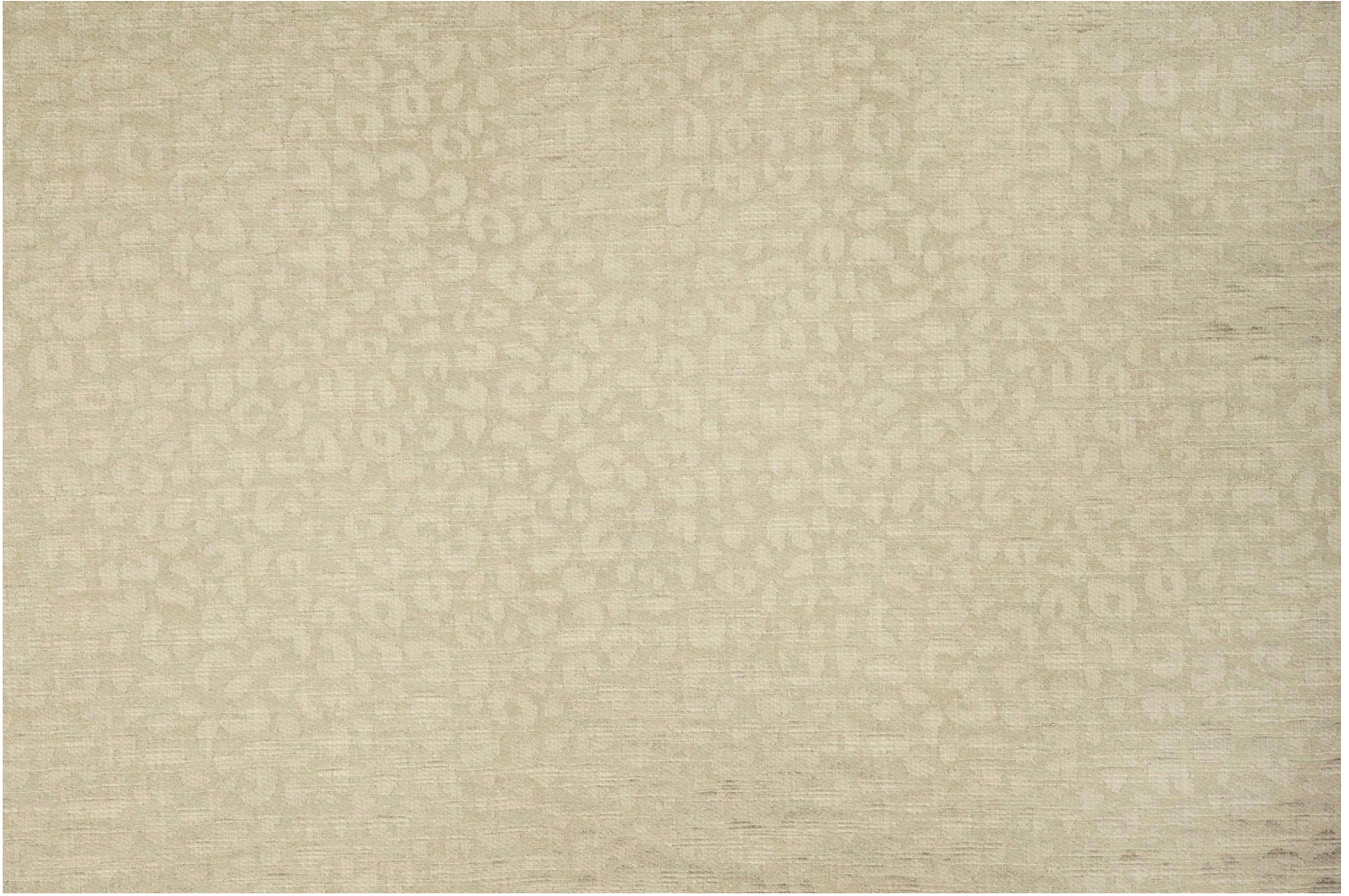
Collection	RESONANCE
Brand	LELIEVRE

### TECHNICAL DATA

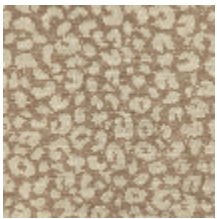
Composition	Viscose 44% - Polyamide 37% - Linen 19%
Width	142 cm
Repeat cut	No
Vertical repeat	24 cm
Horizontal repeat	36 cm
Drop match	No
Care	   
Uses	   
Martindale test	50 000 T
Weight / Linear metre	510 g

# LELIEVRE

PARIS



## Available colours



4031-01  
**FAUVE - PERLE**



4031-02  
**FAUVE - ECRU**



4031-03  
**FAUVE - BEIGE**



4031-04  
**FAUVE - OR**



4031-05  
**FAUVE - BRUN**



4031-06  
**FAUVE -  
CARMEL**

# LELIEVRE

PARIS

## FAUVE - ECRU

4031-02

