

LELIEVRE

PARIS

FAUVE - BRUN

4031-05



FAUVE is an animal skin design, a jacquard woven in the Lelièvre mill near Lyon. It features a beautiful play on texture: a smooth and vibrant effect created by the strie wrap, and a textured effect from the viscose linen yarn. FAUVE blends perfectly with the other patterns of the collection bringing a very modern look.

Collection **RESONANCE**

Brand **LELIEVRE**

TECHNICAL DATA

Composition **Viscose 44% - Polyamide 37%
- Linen 19%**

Width **142 cm**

Repeat cut **No**

Vertical repeat **24 cm**

Horizontal repeat **36 cm**

Drop match **No**

Care 

Uses 

Martindale test **50 000 T**

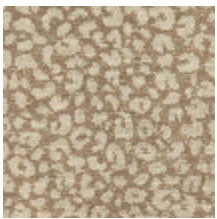
Weight / Linear metre **510 g**

LELIEVRE

PARIS



Available colours



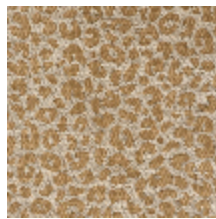
4031-01
FAUVE - PERLE



4031-02
FAUVE - ECRU



4031-03
FAUVE - BEIGE



4031-04
FAUVE - OR



4031-05
FAUVE - BRUN



4031-06
**FAUVE -
CAMEL**

LELIEVRE

PARIS

FAUVE - BRUN

4031-05

