

## ABSTRACT - OR BLEU


4033-03



ABSTRACT is a 100% recycled graphic and cotemporary jacquard inspired by Abstract art. Woven at Lelièvre's mill, this fabric is the result of unique and meticulous expertise. It is treated as a pictorial composition with brushstroke effects and large flat areas of colour. Its drape is elegant and supple.

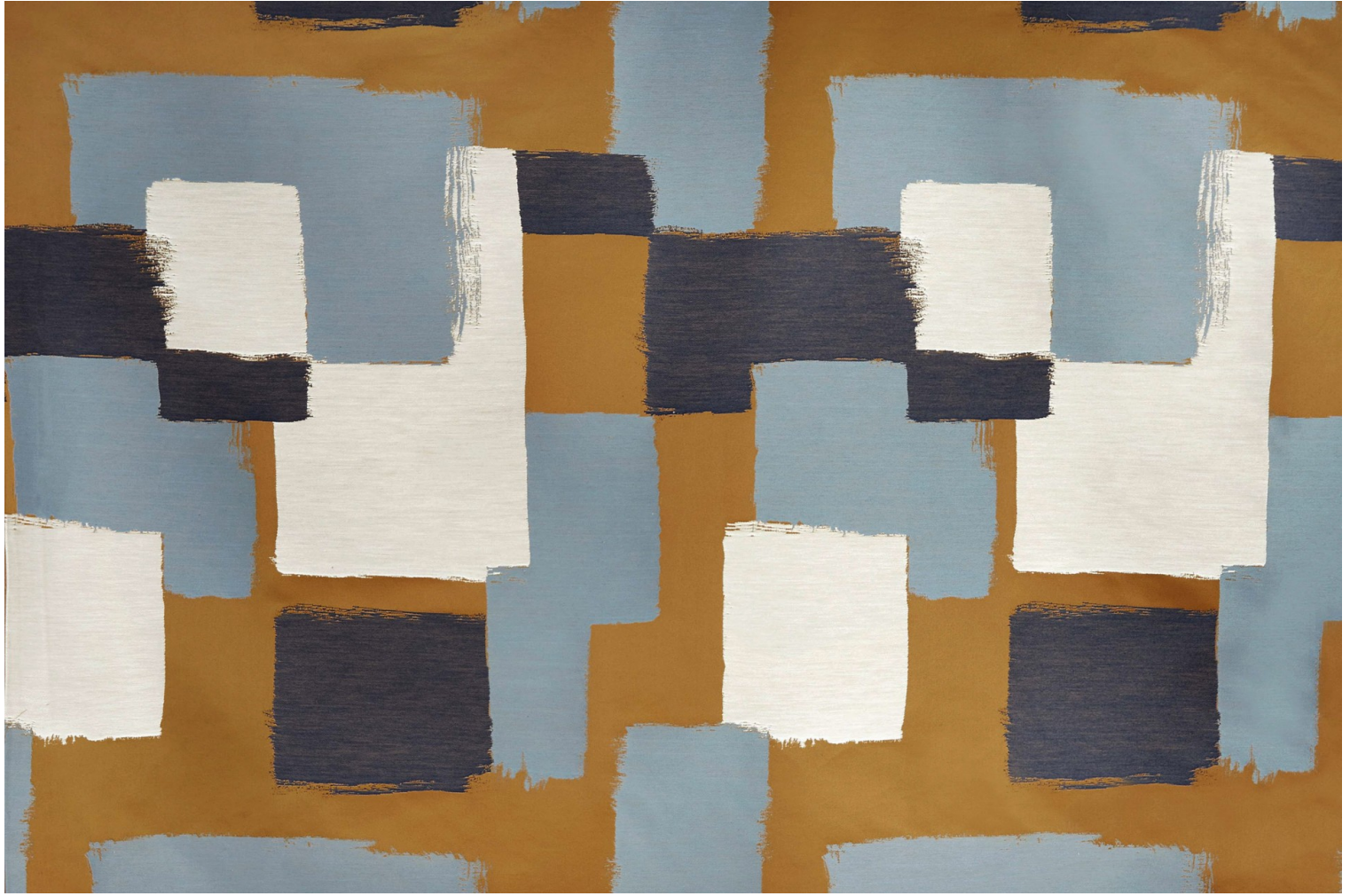
Collection	RESONANCE
Brand	LELIEVRE PARIS

### TECHNICAL DATA

Type	Jacquard
Composition	Cotton GRS 70% - Polyester GRS 30%
Width	140 cm
Repeat cut	No
Vertical repeat	71 cm
Horizontal repeat	70 cm
Half drop match	No
Care	  
Uses	   
Weight / Linear metre	470 g

# LELIEVRE

PARIS



## Available colours



4033-01  
**ABSTRACT -  
BLANC SABLE**



4033-02  
**ABSTRACT -  
TERRA NATUREL**



4033-03  
**ABSTRACT - OR  
BLEU**



4033-04  
**ABSTRACT -  
VERT MARINE**



**ABSTRACT - OR BLEU**

4033-03

